

# FINAL FACILITY AND SERVICE STRUCTURES

CE submission

Version: 8.0

Last updated: 25 November 2020



**Health**  
Western Sydney  
Local Health District

# CURRENT WESTMEAD HOSPITAL ORGANISATION STRUCTURE (affected highlighted)

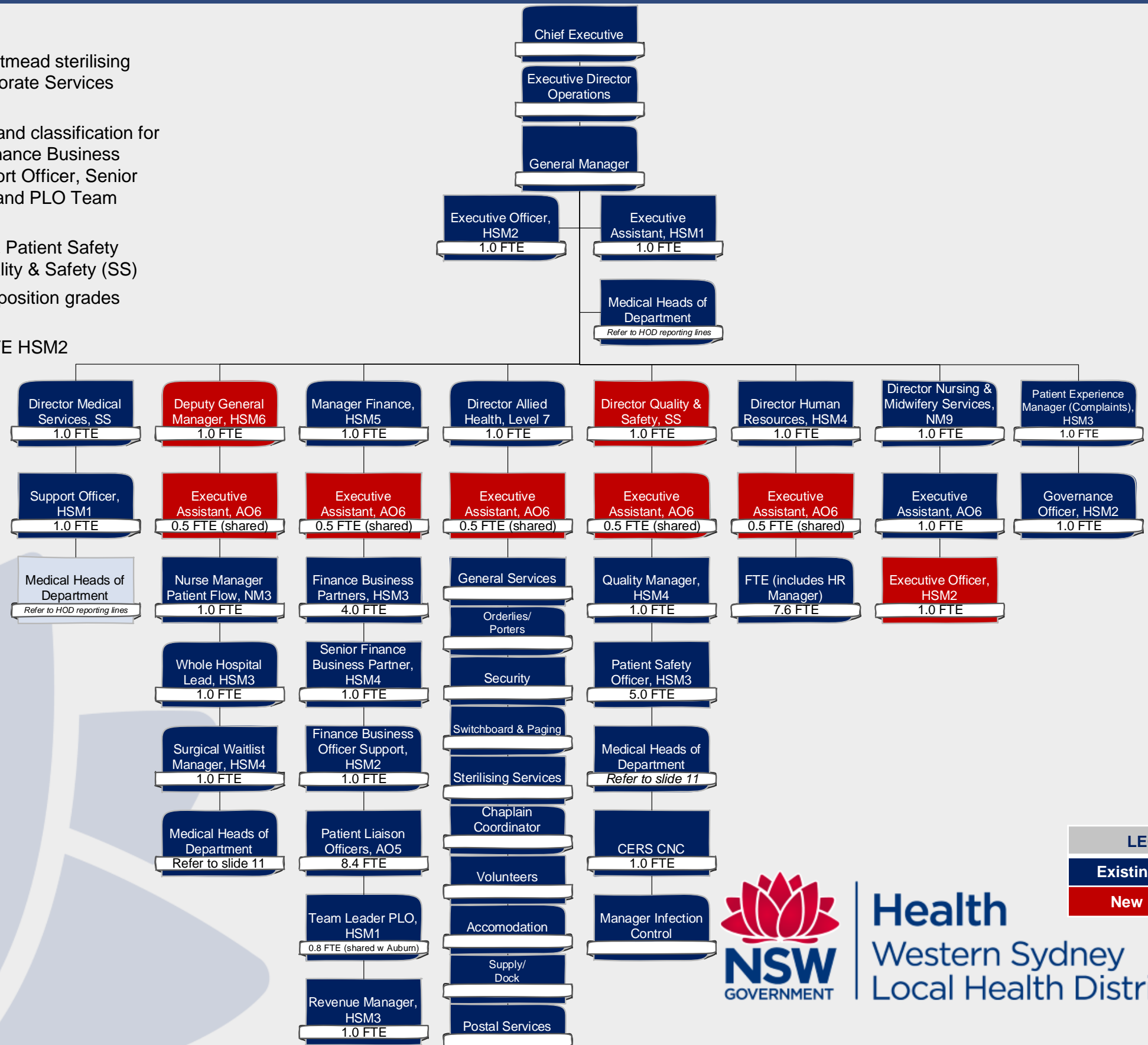
General Manager Westmead and Auburn						
OFFICE OF THE GENERAL MANAGER: Operations Director, Executive Assistant, Executive Officer, Governance Officer, Manager Quality and Accreditation, Administration Officer Quality and Accreditation						
<div>Division of Surgery and Anaesthetics</div> <div>Clinical Director Operations Director Executive Assistant Nurse Operations Manager</div> <div>Acute Surgical Unit</div> <div>Anaesthetics and Perioperative Medicine</div> <div>Bookings and Admissions</div> <div>Breast Surgery</div> <div>Cardiothoracic Surgery</div> <div>Colorectal Surgery</div> <div>ENT Surgery</div> <div>Neurosurgery</div> <div>Ophthalmology</div> <div>Oral and Maxillofacial Surgery</div> <div>Orthopaedic Surgery</div> <div>Plastic Surgery</div> <div>Podiatry</div> <div>Sterilisation</div> <div>Surgical Oncology Head and Neck</div> <div>Trauma</div> <div>Upper GI Surgery</div> <div>Urology</div> <div>Vascular Surgery</div>	<div>Division of Critical Care and Medicine</div> <div>Clinical Director Operations Director Executive Assistant Nurse Operations Manager</div> <div>Cardiology</div> <div>Cardiothoracic ICU</div> <div>Emergency Department</div> <div>Geriatric Medicine</div> <div>Intensive Care</div> <div>Neurology</div> <div>Organ and Tissue Donation Service</div> <div>Rehabilitation Medicine</div> <div>Respiratory and Sleep Medicine</div>	<div>Division of Medicine and Cancer Services</div> <div>Clinical Director Operations Director Executive Assistant Nurse Operations Manager</div> <div>Ambulatory Services</div> <div>Adolescent Health</div> <div>Dermatology</div> <div>Diabetes-Endocrine</div> <div>Genetic Medicine</div> <div>Immunology and Allergy</div> <div>Rheumatology</div> <div>University Clinic</div> <div>Breast Cancer Institute</div> <div>Cancer Services</div> <div>Familial Cancer</div> <div>Haematology and Bone Marrow Transplant</div> <div>Medical Oncology</div> <div>Palliative and Support Care</div> <div>Radiation Oncology Network</div> <div>Drug Health Services</div> <div>Gastro Services</div> <div>Clinical Pharmacology</div> <div>Endoscopy</div> <div>Gastroenterology and Hepatology</div> <div>Hepatology</div> <div>Toxicology</div> <div>Infectious Diseases Services</div> <div>Infection Prevention and Control</div> <div>Infectious Diseases</div> <div>Sexual Health / HARP</div> <div>Private Consulting Rooms</div> <div>Renal Services</div> <div>Renal Medicine</div> <div>Transplant Services</div> <div>Western Renal Service</div>	<div>Division of Women's and Newborn Health</div> <div>Clinical Director Operations Director Executive Assistant Nurse Operations Manager</div> <div>Gynaecology</div> <div>Gynaecological Oncology</div> <div>Maternal Foetal Medicine</div> <div>Neonatology</div> <div>Obstetrics</div> <div>Reproductive Medicine</div> <div>State-wide Infant Screening</div> <div>Hearing</div> <div>Uro-Gynaecology</div>	<div>Oral Health</div> <div>Director Deputy Director Executive Assistant</div> <div>Endodontics</div> <div>Oral Health General Services</div> <div>Oral Medicine</div> <div>Orthodontics</div> <div>Paediatric Dentistry</div> <div>Periodontics</div> <div>Prosthodontics</div> <div>Special Care Dentistry</div>	<div>Division of Clinical Support</div> <div>Chief Medical Advisor (CMA) Director of Nursing and Midwifery D/Director Nursing and Midwifery Executive Support Officer, CMA Executive Assistant, DNM Operations Manager, Medical Services Medical Coordinator</div> <div>Imaging</div> <div>Patient Advice and Liaison</div> <div>Pharmacy</div> <div>Resident Support Unit</div> <div>Hospital in the Home</div> <div>Nursing Clinical Support</div> <div>Patient Discharge Unit</div> <div>Patient Flow</div> <div>Audiology</div> <div>Dietetics</div> <div>Medical Physics</div> <div>Occupational Therapy</div> <div>Physiotherapy</div> <div>Speech Pathology</div> <div>Social Work</div>	<div>Corporate Services, WMA</div> <div>Director</div> <div>Casuarina Lodge</div> <div>General / Environmental Services</div> <div>Orderlies</div> <div>Pastoral Care</div> <div>Postal</div> <div>Retail and Commercial</div> <div>Security and Parking</div> <div>Staff Accommodation</div> <div>Supply Distribution</div> <div>Switchboard and Paging</div> <div>Volunteers</div>
Director, Allied Health Westmead and Auburn						
Clinical Governance						
Corporate Governance						
Manager, Finance and Business						
Medical Services						
Nursing and Midwifery Services						
Research and Education						



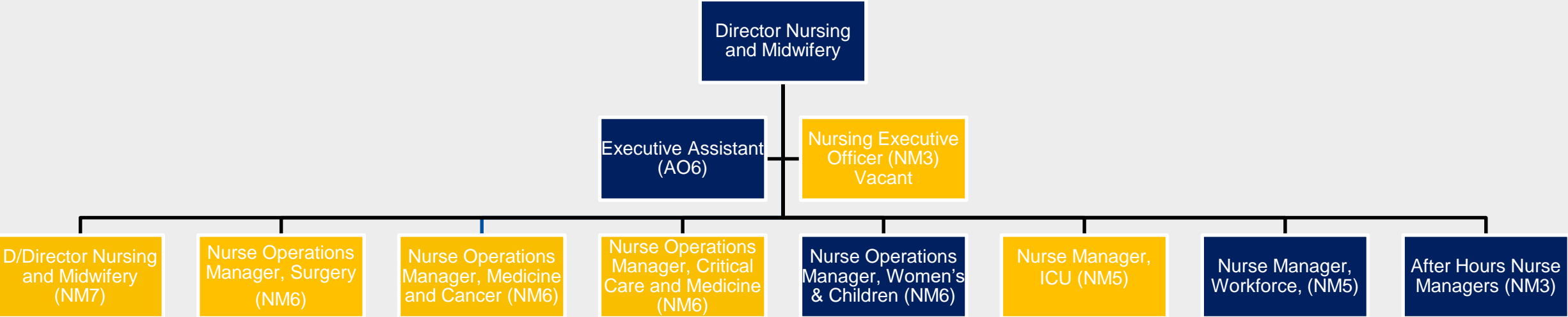
# WESTMEAD HOSPITAL ORGANISATION STRUCTURE

## CHANGES FROM VERSION 7:

- Confirmation and insertion of Westmead sterilising services reporting line under Corporate Services Manager HSM5
- Correction and insertion of grade and classification for Westmead Revenue Manager, Finance Business Partners, Finance Business Support Officer, Senior Finance Business Partner, PLOs and PLO Team Leader
- Correction of Westmead Quality & Patient Safety Manager (SS) title to Director Quality & Safety (SS)
- Correction of Executive Assistant position grades (AO6)
- Insertion of Executive Officer 1 FTE HSM2



# CURRENT WESTMEAD NURSING STRUCTURE (affected highlighted)

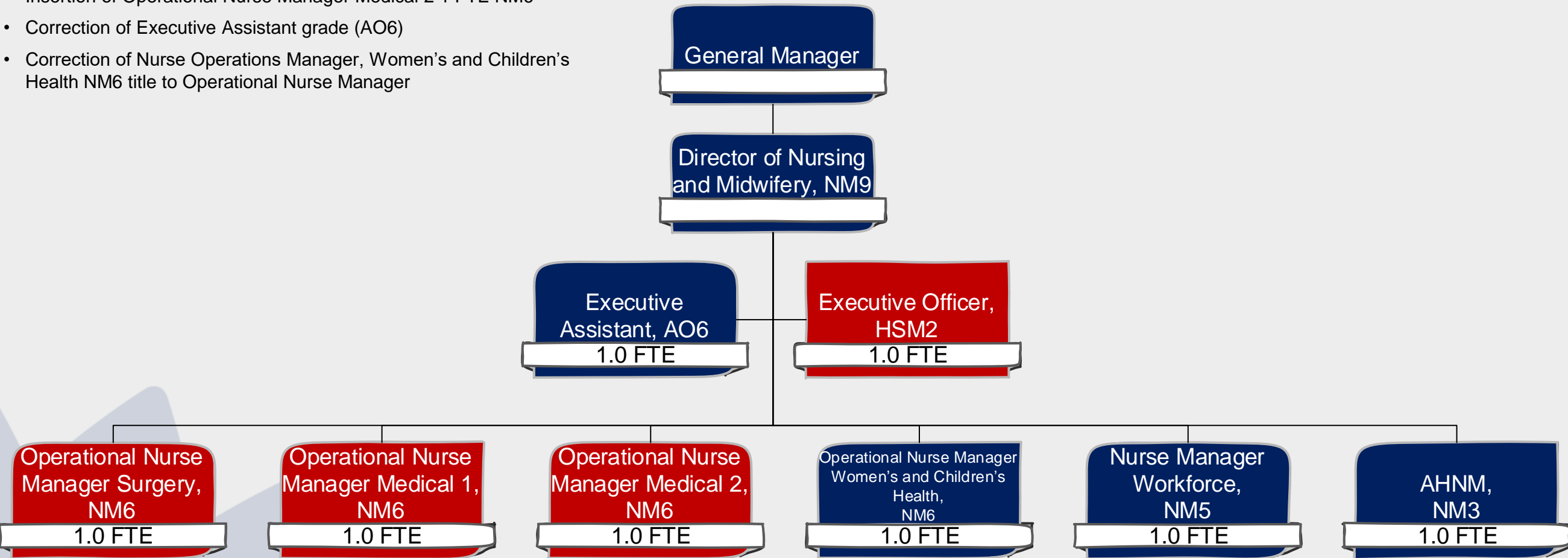


# WESTMEAD HOSPITAL

## Executive Nursing Structure – Part 1 of 6

**CHANGES FROM VERSION 7:**

- Insertion of Executive Officer 1 FTE HSM2
- Insertion of Operational Nurse Manager Medical 2 1 FTE NM6
- Correction of Executive Assistant grade (AO6)
- Correction of Nurse Operations Manager, Women’s and Children’s Health NM6 title to Operational Nurse Manager



**LEGEND**

Existing position

New Position



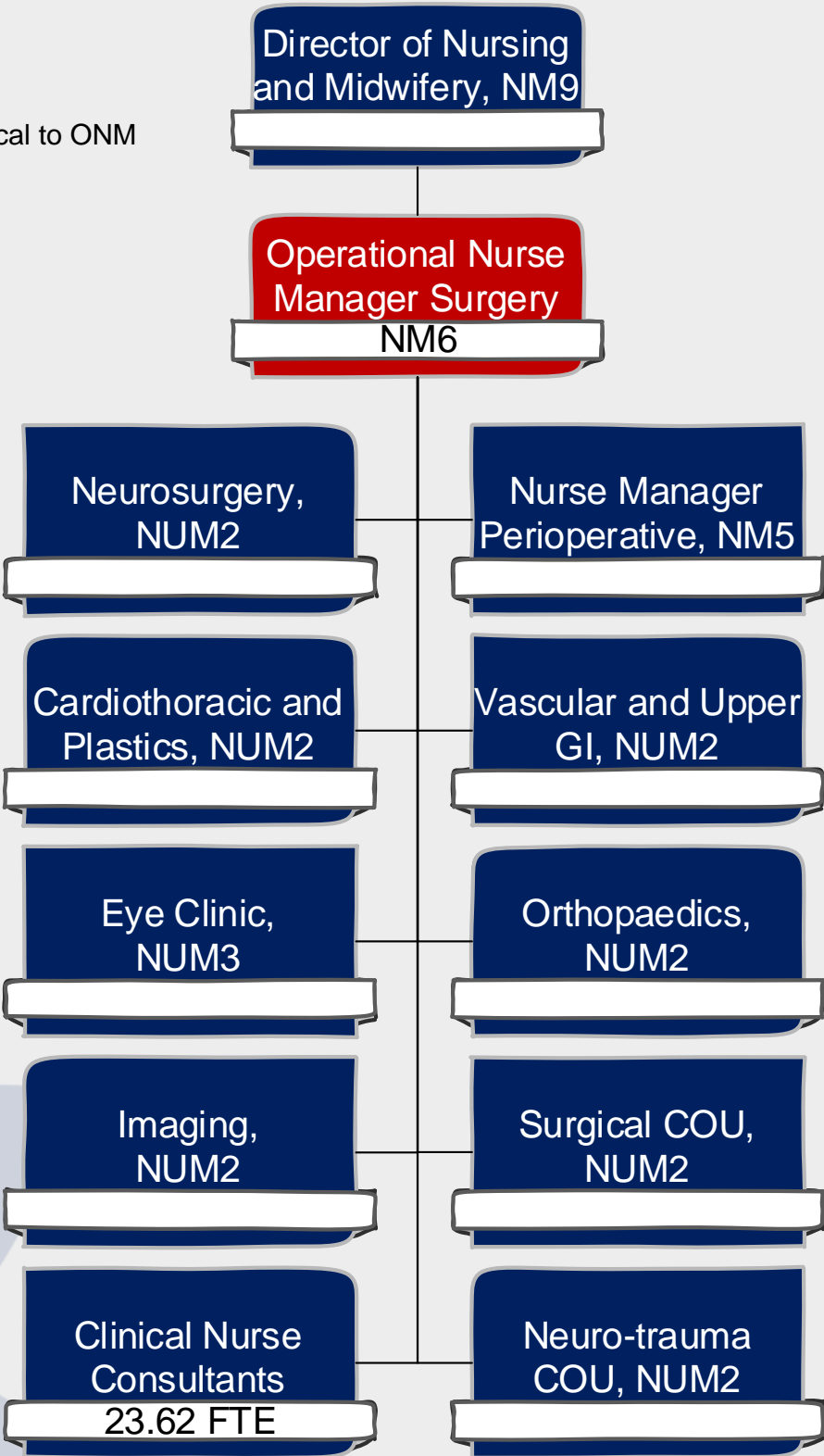
**Health**  
Western Sydney  
Local Health District

# WESTMEAD HOSPITAL

## Surgery Nursing Structure – Part 2 of 6

**CHANGES FROM VERSION 7:**

- Correction of Intensive Care NM5 under ONM Surgery
- Correction of Imaging NUM2 allocation from ONM Medical to ONM Surgery
- Correction of Eye Clinic title from NUM2 to NUM3



**LEGEND**

Existing position

New Position



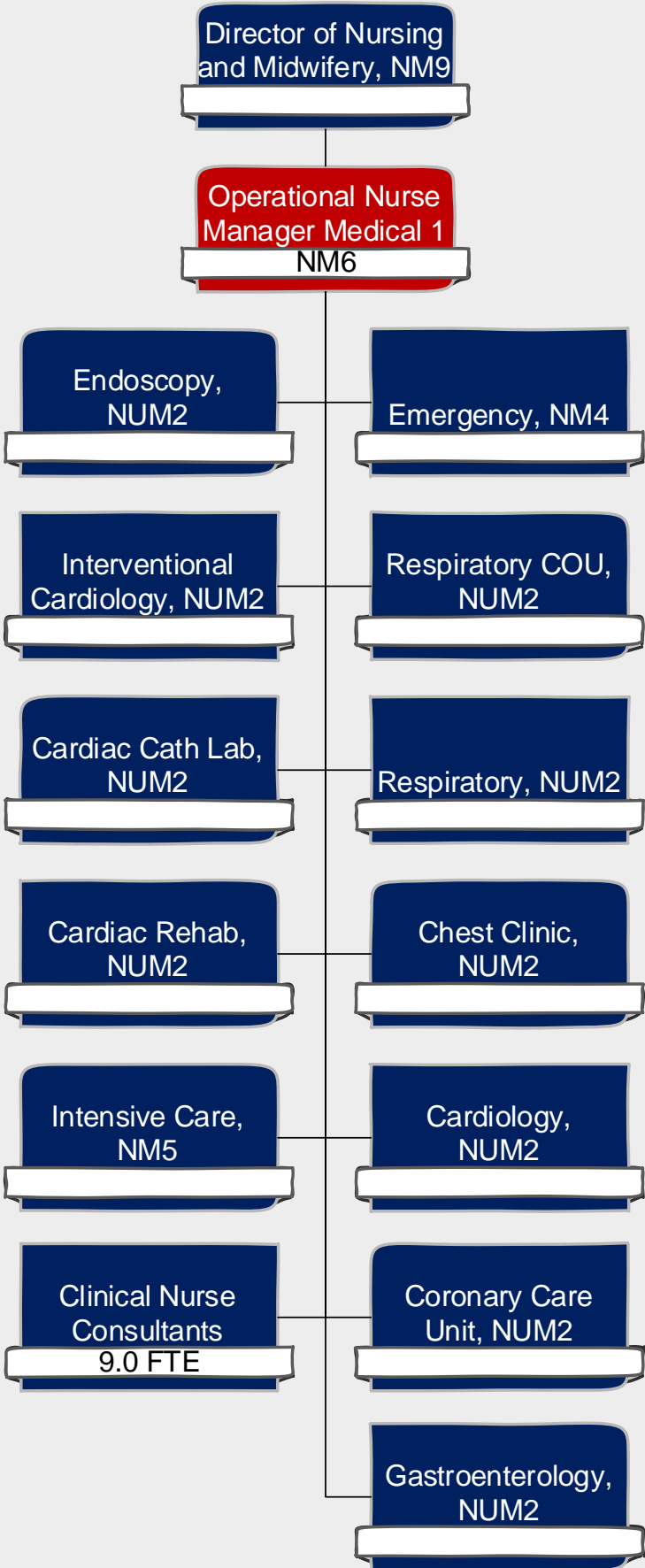
**Health**  
Western Sydney  
Local Health District

# WESTMEAD HOSPITAL

## Medical Nursing Structure – Part 3 of 6

**CHANGES FROM VERSION 7:**

- Correction of Imaging NUM2 under ONM Medical 1
- Correction of Intensive Care NM 5 allocation from ONM Surgery to ONM Medical 1
- Correction in Clinical Nurse Consultant profile from 23.62FTE to 9FTE
- Transfer of some services to additional ONM (see Part 4 of 6)



LEGEND

Existing position

New Position



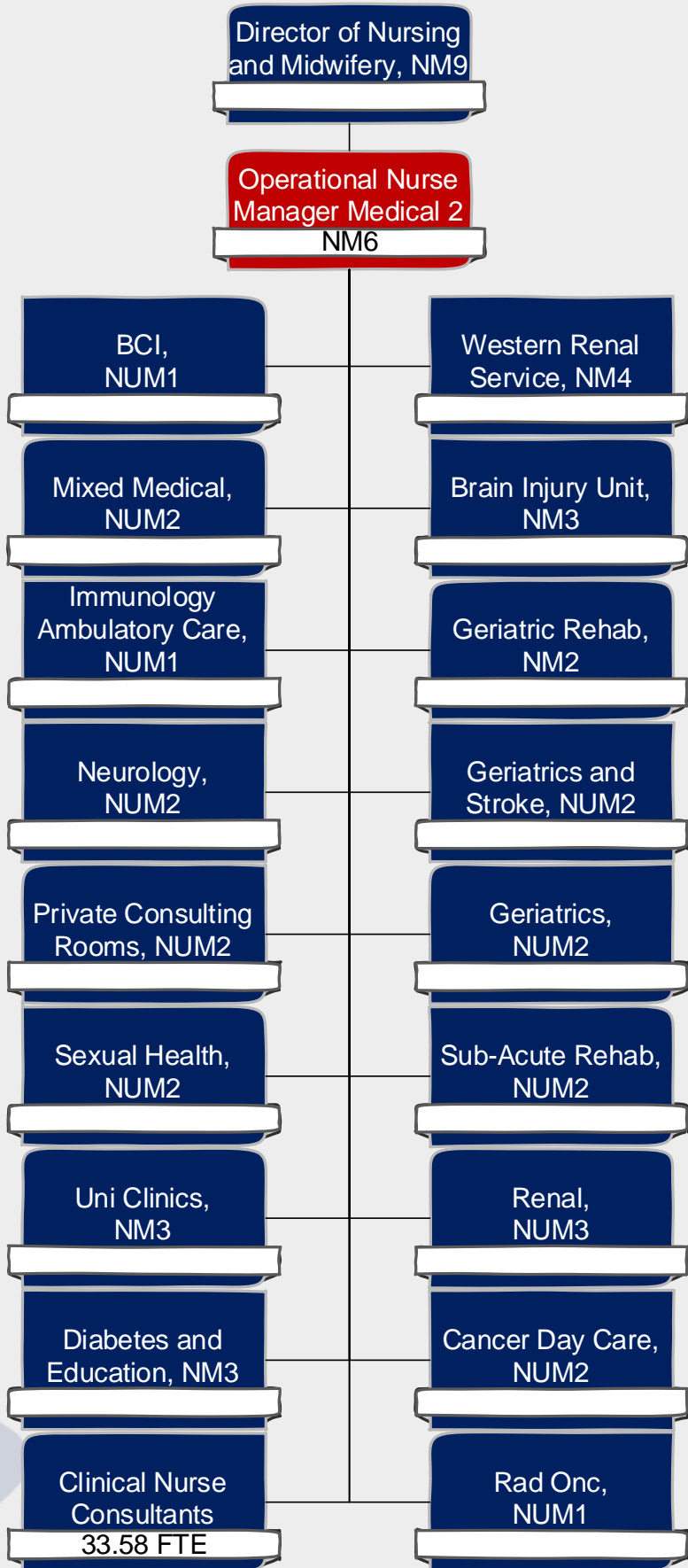
Health  
Western Sydney  
Local Health District

# WESTMEAD HOSPITAL

## Medical Nursing Structure – Part 4 of 6

**CHANGES FROM VERSION 7:**

- Insertion of 4th ONM – ONM Medical 2 NM6
- Insertion of services reporting to ONM Medical 2 position



LEGEND
Existing position
New Position



Health  
Western Sydney  
Local Health District

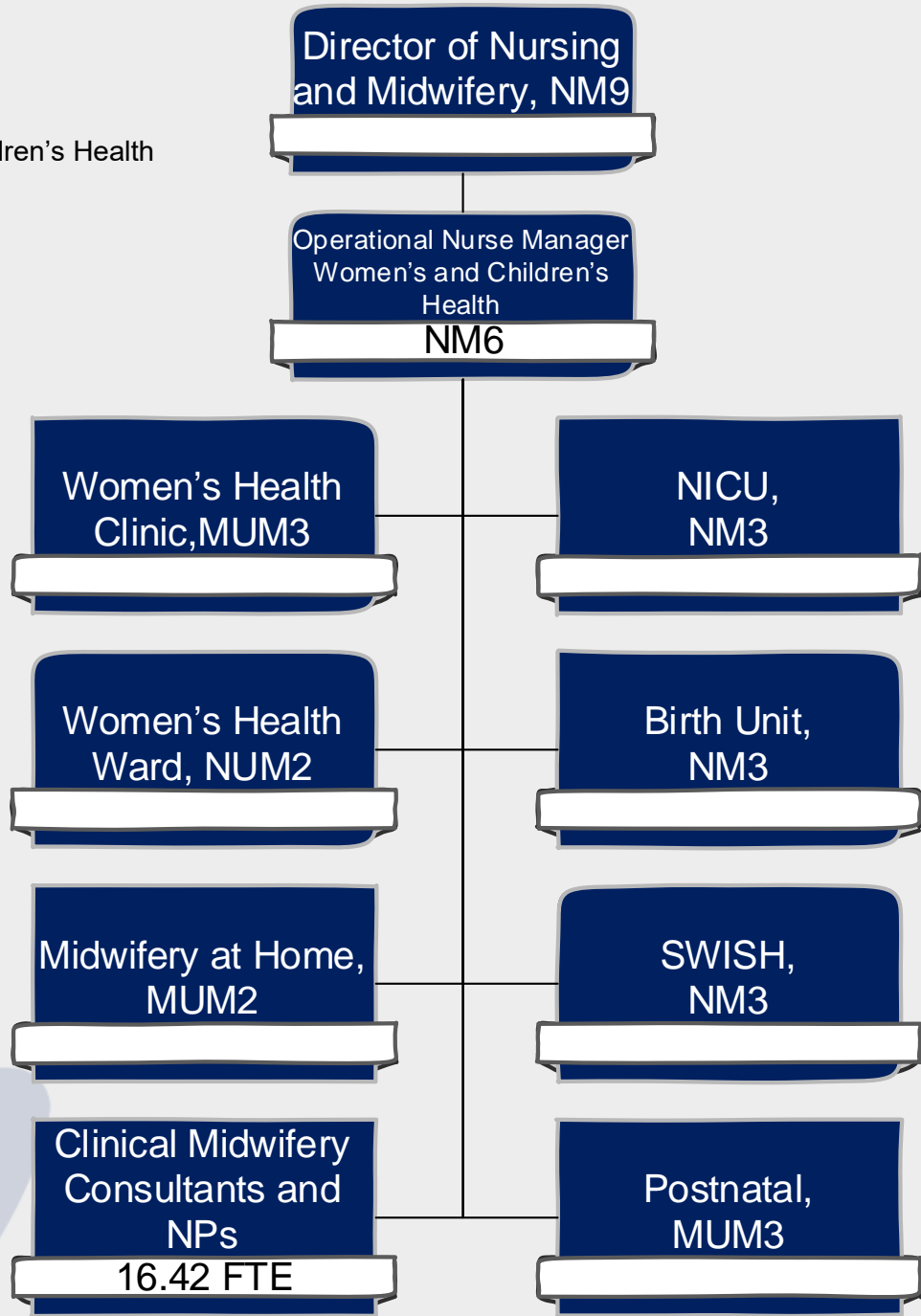


# WESTMEAD HOSPITAL

## Women's and Children's Health Nursing Structure – Part 5 of 6

**CHANGES FROM VERSION 7:**

- Correction of NICU title from NUM3 to NM3
- Correction of Birth Unit title from NUM3 to NM3
- Correction of SWISH title from NUM3 to NM3
- Correction of Nurse Operations Manager, Women's and Children's Health NM6 title to Operational Nurse Manager



**LEGEND**

Existing position

New Position



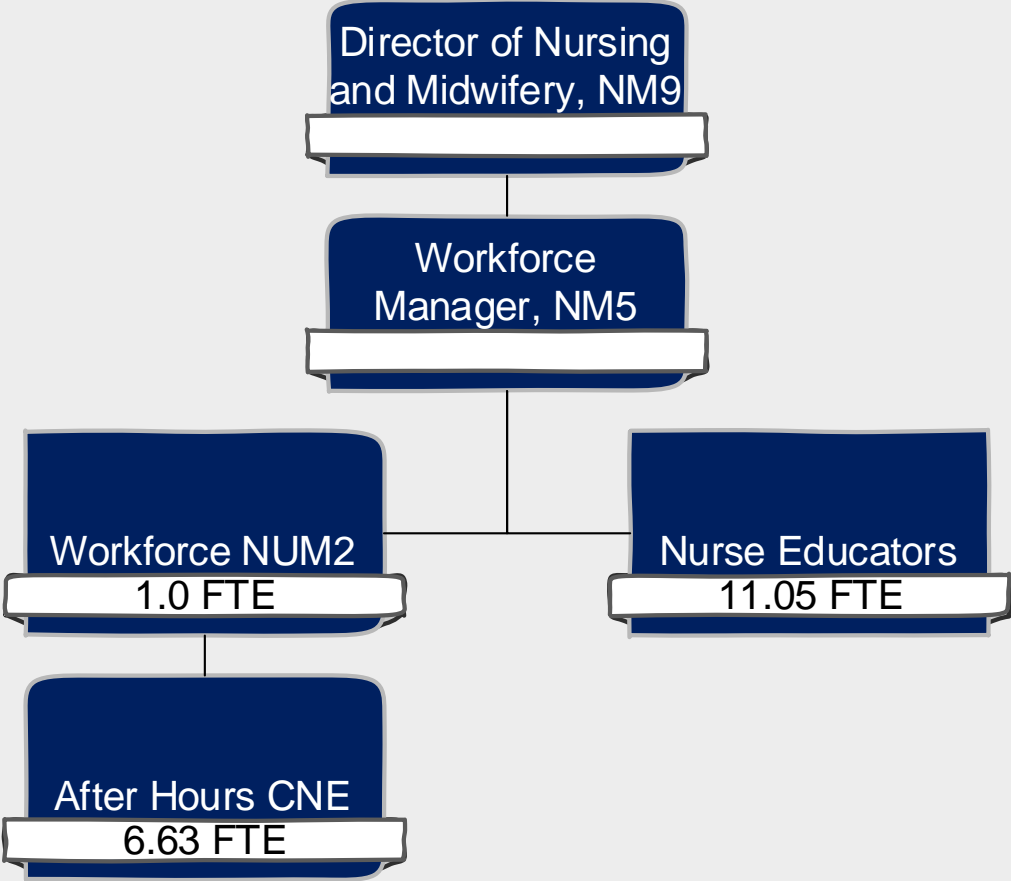
**Health**  
Western Sydney  
Local Health District

# WESTMEAD HOSPITAL

## Workforce Nursing Structure – Part 6 of 6

CHANGES FROM VERSION 7:

- nil



LEGEND

Existing position

New Position



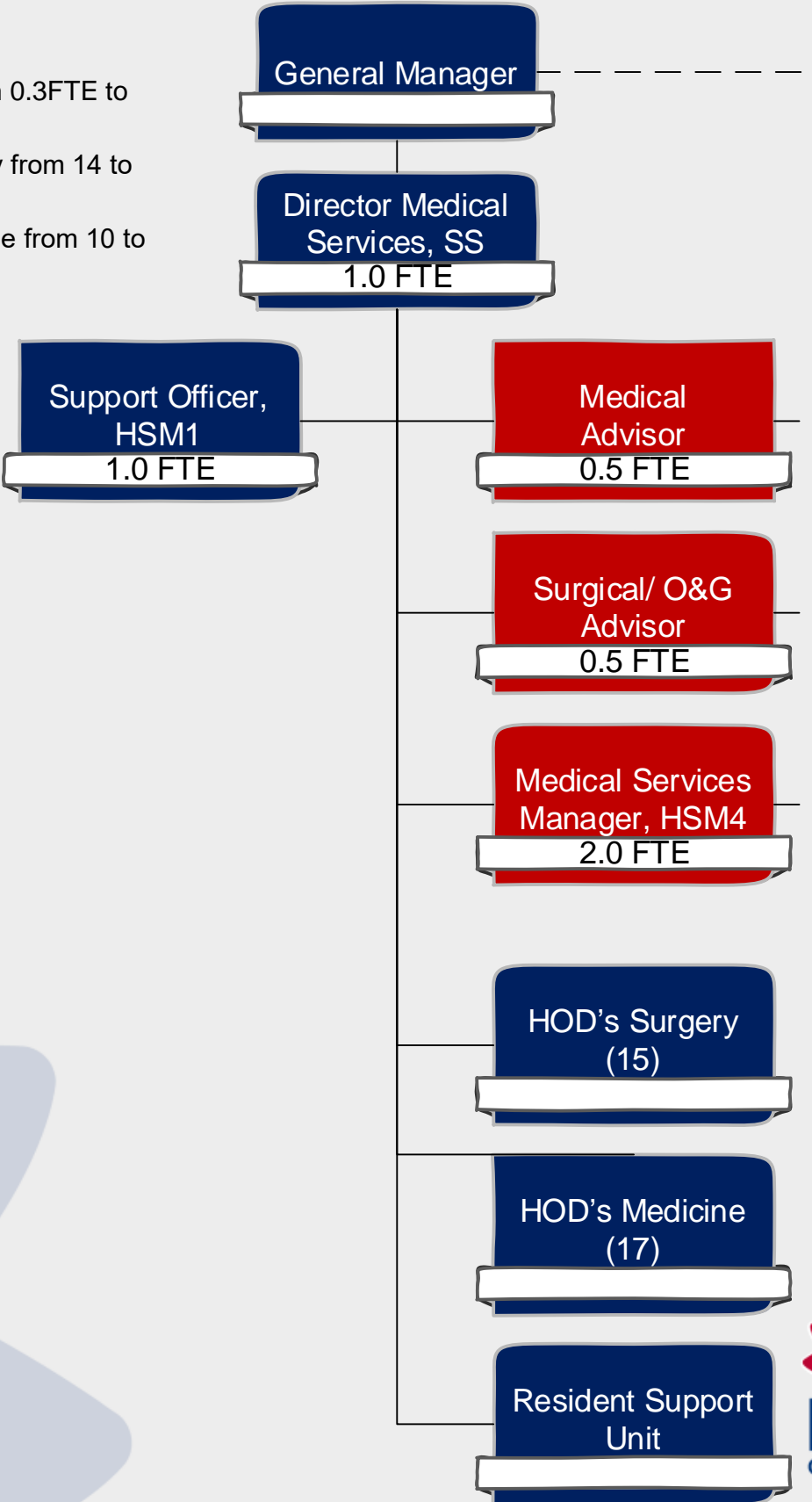
Health  
Western Sydney  
Local Health District

# WESTMEAD HOSPITAL

## Medical Reporting Structure

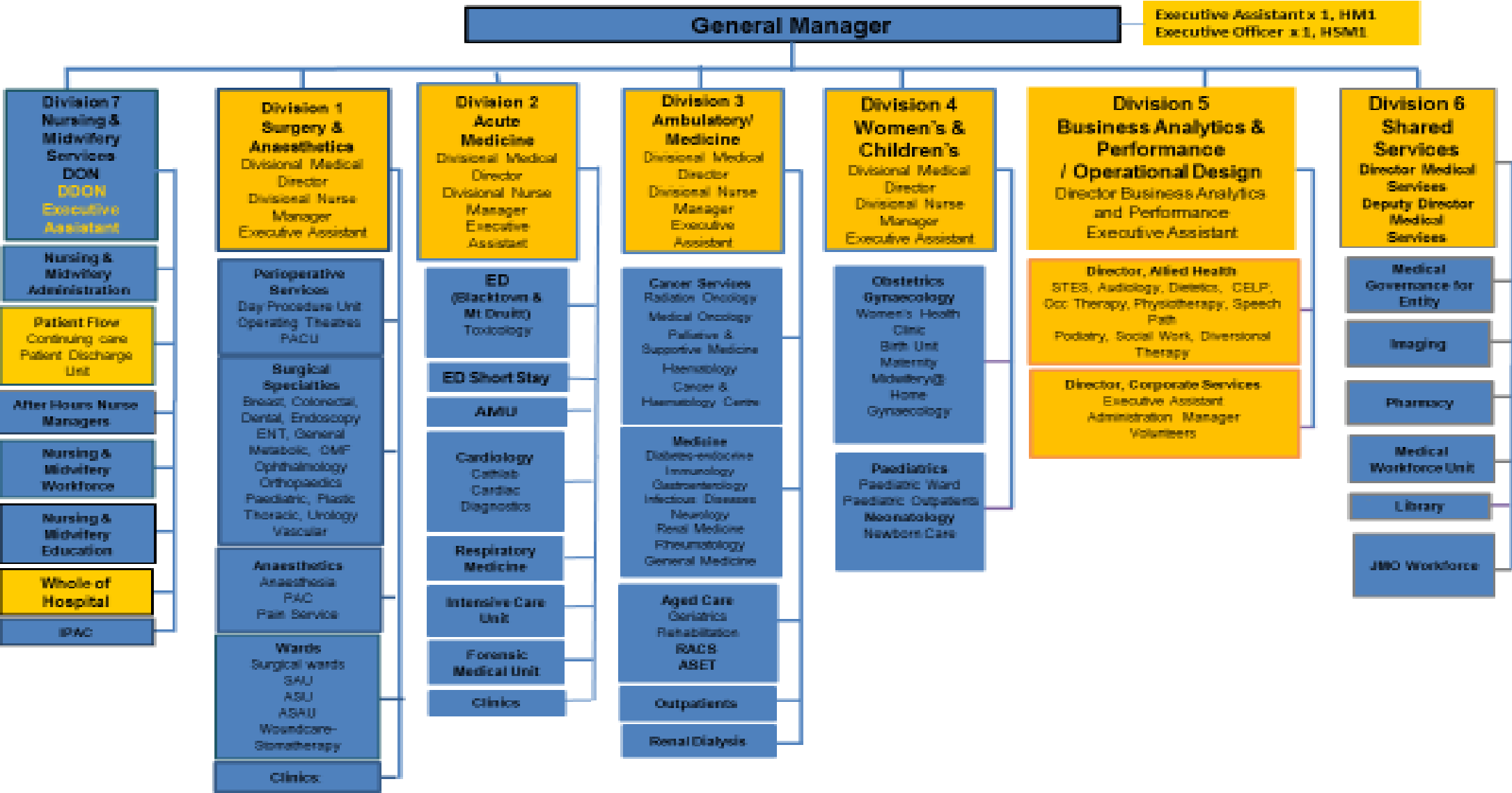
**CHANGES FROM VERSION 7:**

- Correction of Medical/Surgical Advisor classification from 0.3FTE to 0.5FTE
- Confirmation and correction of number of HOD's Surgery from 14 to 15
- Confirmation and correction of number of HOD's Medicine from 10 to 17



LEGEND
Existing position
New Position

# CURRENT BMDH ORGANISATION STRUCTURE (affected highlighted)



Clinical Governance
Corporate Governance
Finance and Business
Human Resources
Medical Services
Nursing and Midwifery Services
Research and Education

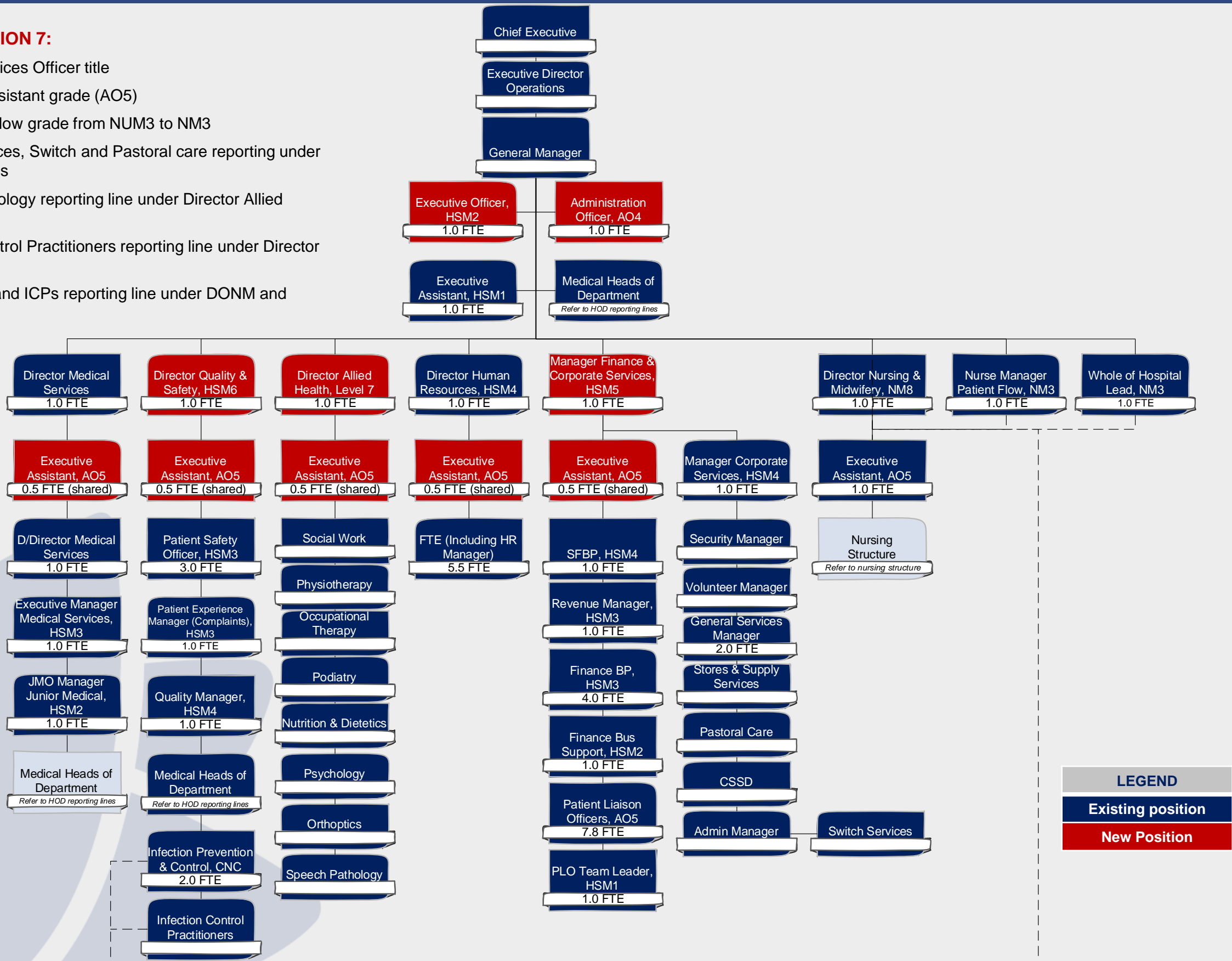




# BMDH HOSPITAL ORGANISATION STRUCTURE

## CHANGES FROM VERSION 7:

- Correction of General Services Officer title
- Correction of Executive Assistant grade (AO5)
- Correction of NM Patient Flow grade from NUM3 to NM3
- Correction of Supply Services, Switch and Pastoral care reporting under Manager Corporate Services
- Correction of Speech Pathology reporting line under Director Allied Health
- Correction of Infection Control Practitioners reporting line under Director Quality & Safety and DON
- Confirmation of IPC CNC and ICPs reporting line under DONM and Director Quality & Safety

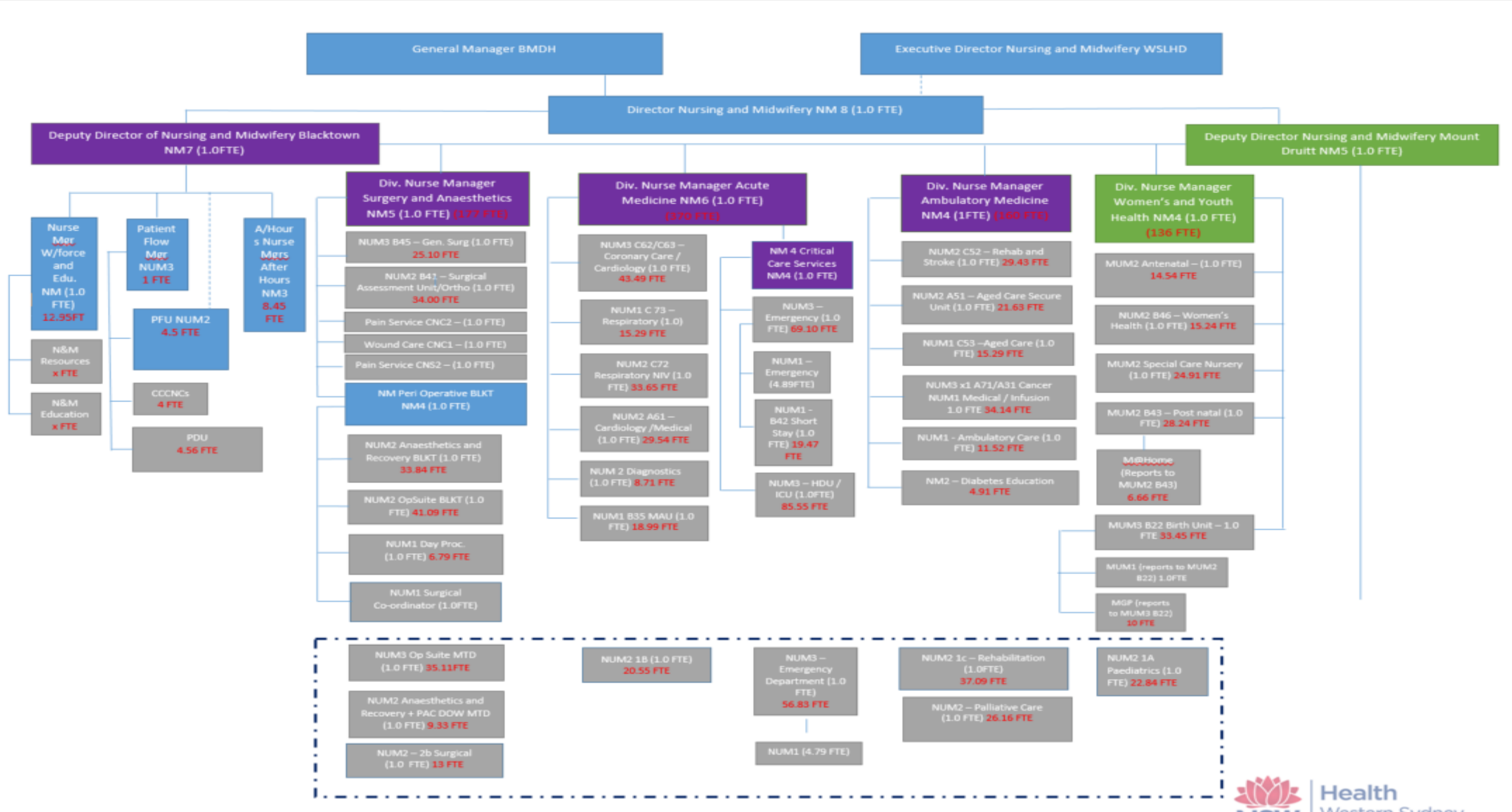


### LEGEND

Existing position

New Position

# CURRENT BMDH NURSING STRUCTURE

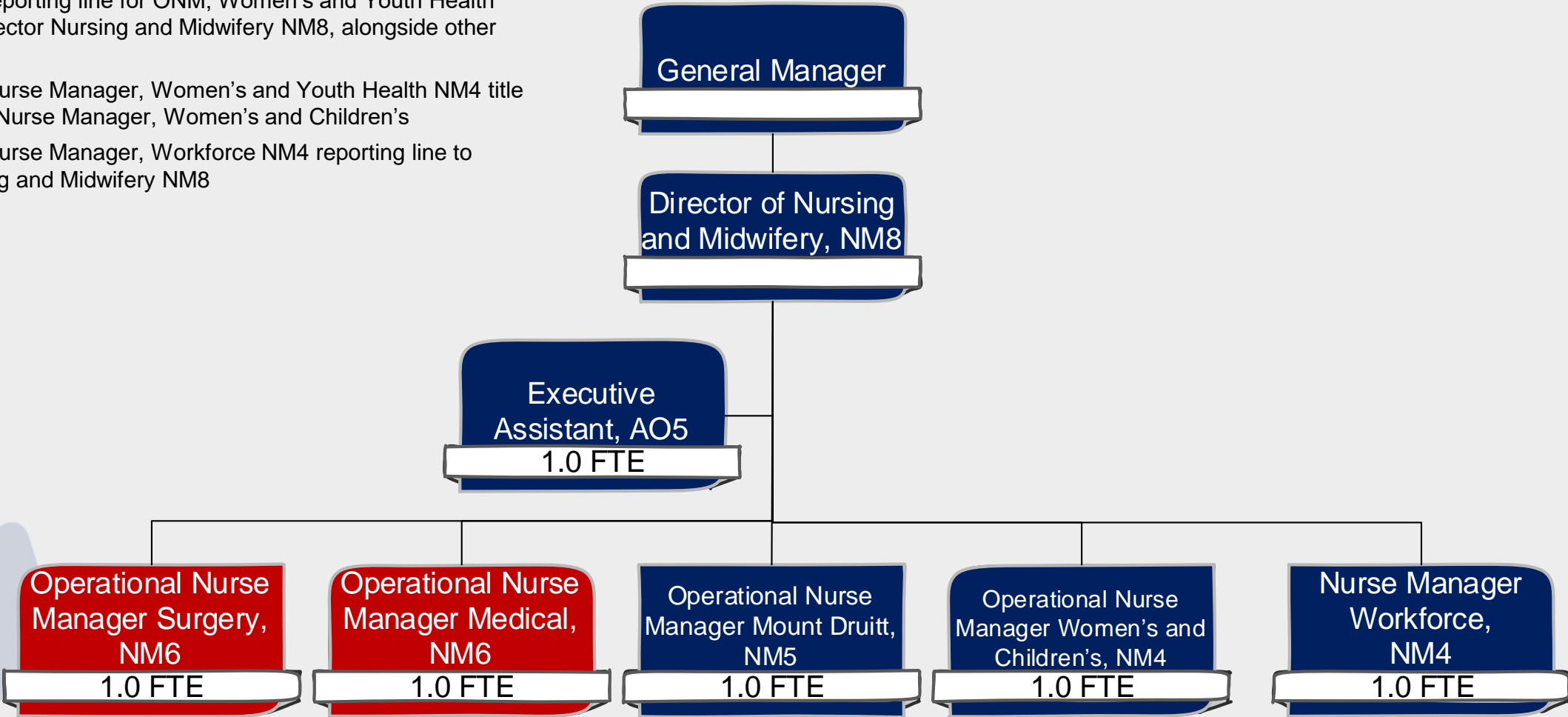


# BMDH HOSPITAL

## Executive Nursing Structure – Part 1 of 6

**CHANGES FROM VERSION 7:**

- Correction of reporting line for ONM, Women’s and Youth Health NM4 under Director Nursing and Midwifery NM8, alongside other ONM positions
- Correction of Nurse Manager, Women’s and Youth Health NM4 title to Operational Nurse Manager, Women’s and Children’s
- Correction of Nurse Manager, Workforce NM4 reporting line to Director Nursing and Midwifery NM8



**LEGEND**

Existing position

New Position



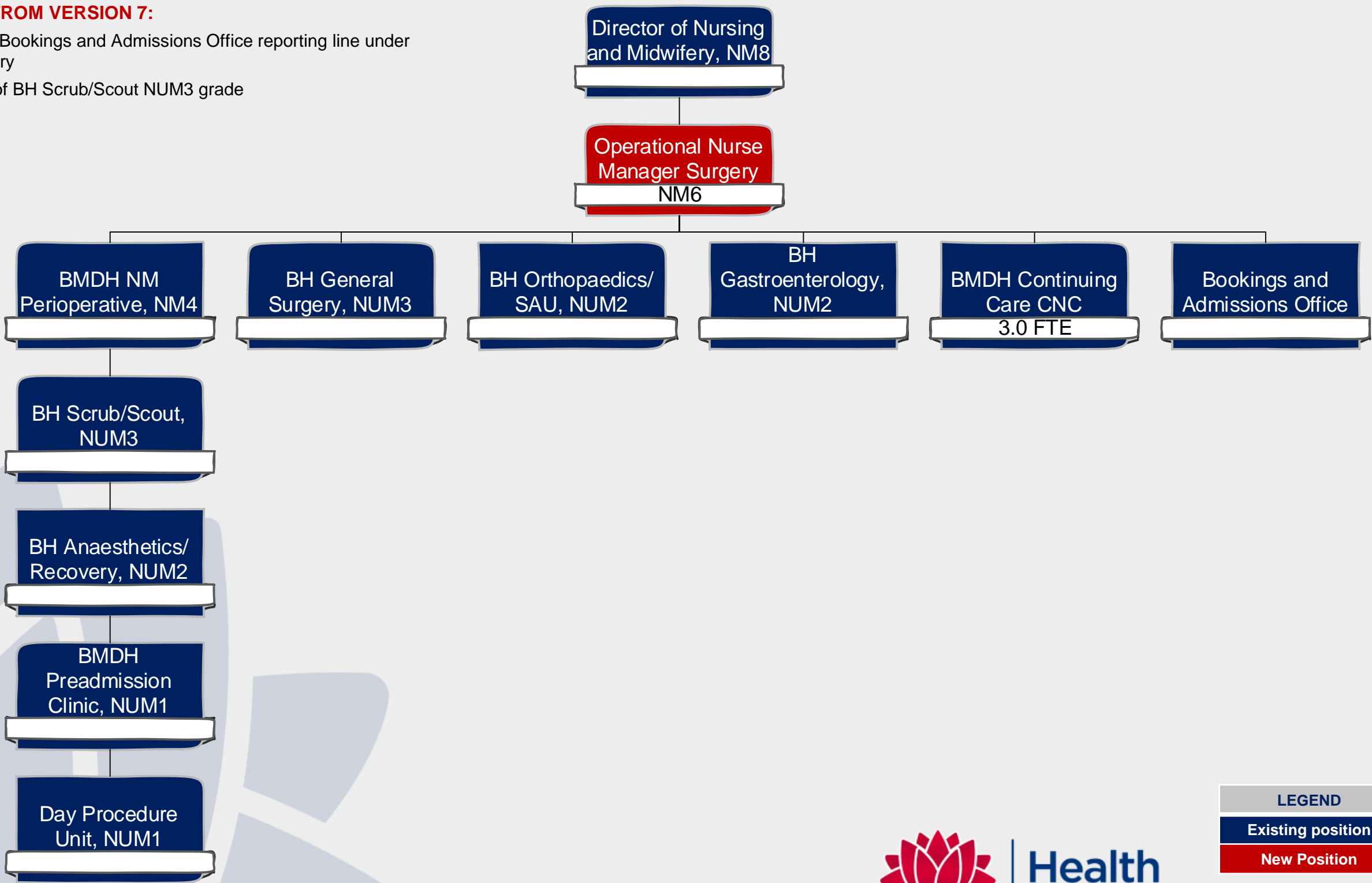
**Health**  
Western Sydney  
Local Health District

# BMDH HOSPITAL

## Surgery Nursing Structure – Part 2 of 6

**CHANGES FROM VERSION 7:**

- Insertion of Bookings and Admissions Office reporting line under ONM Surgery
- Correction of BH Scrub/Scout NUM3 grade



**LEGEND**

Existing position
New Position

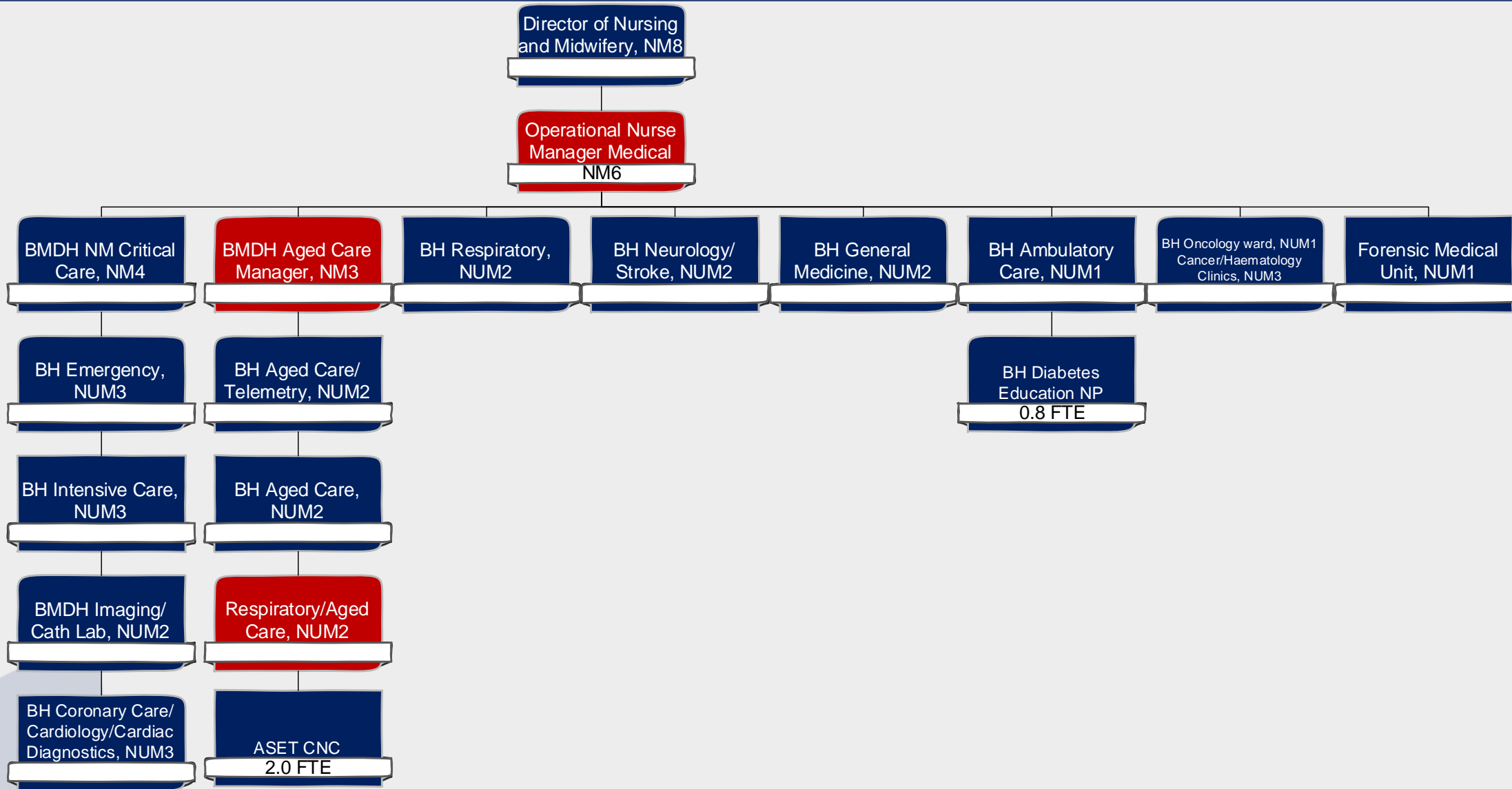


# BMDH HOSPITAL

## Medical Nursing Structure – Part 3 of 6

### CHANGES FROM VERSION 7:

- Correction of BH Ambulatory care NUM1 reporting line to ONM Medical
- Correction of Infection Control Practitioners reporting from ONM Medical, updated to report to DON and Manager Quality & Safety
- Insertion of BMDH Aged Care Manager and transfer of Aged Care wards and services from the ONM Medical to this position
- Amalgamation of wards and deletion of NUM1 Aged Care and NUM1 Aged/Care respiratory
- Insertion of NUM2 Aged Care/Respiratory for new amalgamated ward
- Transfer of Imaging/Cath Lab and Coronary Care /Cardiology / Cardiac Diagnostics reporting line from ONM Medical to Nurse Manager, Critical Care, NM4
- Correction of BH Oncology ward NUM1 and Cancer and Haematology Clinics NUM3 titles
- Correction of BH Diabetes Education NP reporting to BH Ambulatory Care NUM1



#### LEGEND

Existing position

New Position



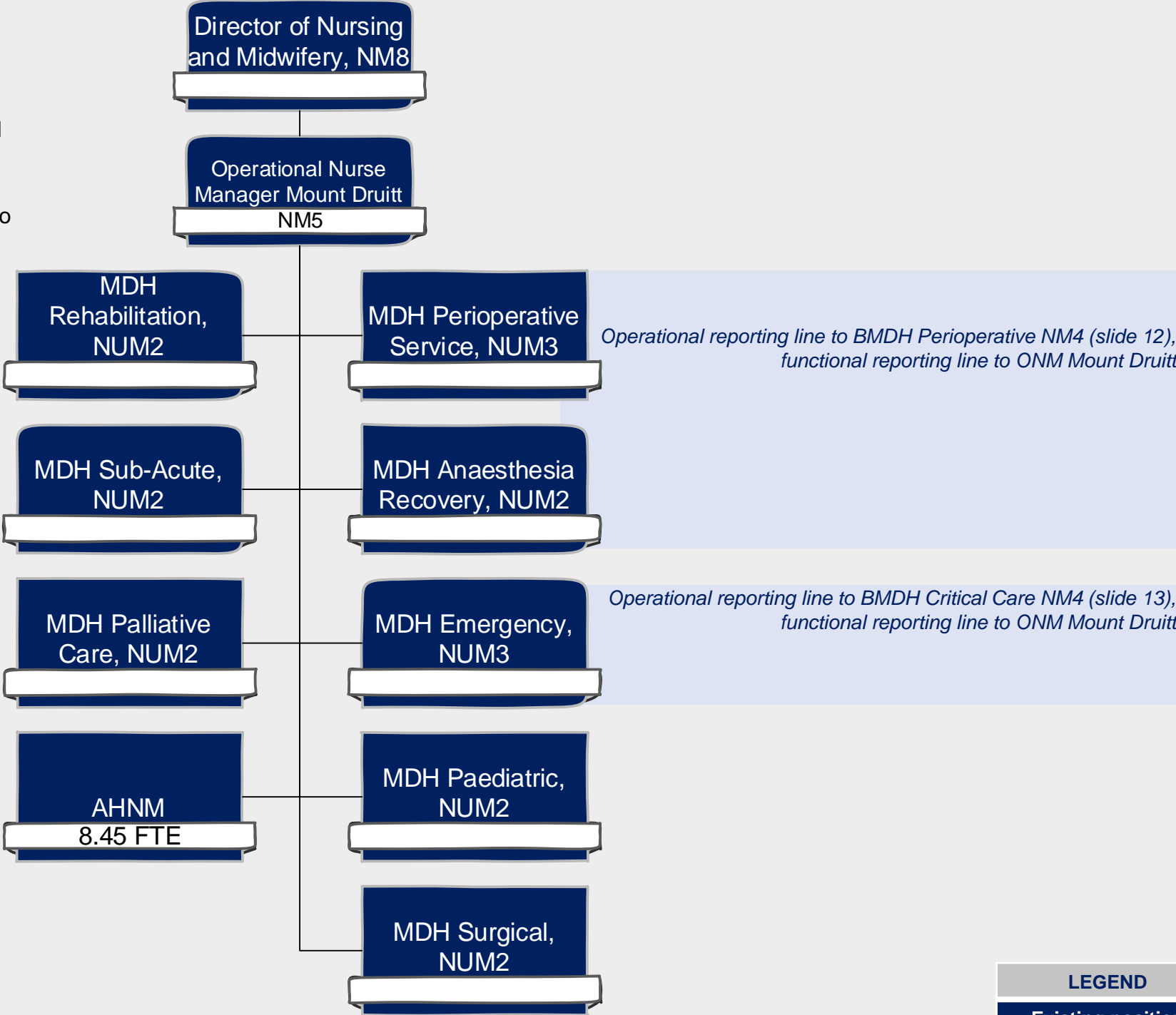
Health  
Western Sydney  
Local Health District

# BMDH HOSPITAL

## Mount Drutt Nursing Structure – Part 4 of 6

**CHANGES FROM VERSION 7:**

- Correction of Nurse Manager, Workforce NM4 reporting line to Director Nursing and Midwifery NM8 (Part 1 of 6)
- Correction of MDH Perioperative Service NUM3 and MDH Anaesthesia Recovery NUM2 operational reporting line to BMDH Perioperative NM4 (slide 2) and functional reporting line to ONM Mount Drutt
- Correction of MDH Emergency NUM3 operational reporting line to BMDH Critical Care NM4 (slide 3) to ONM Mount Drutt



LEGEND
Existing position
New Position

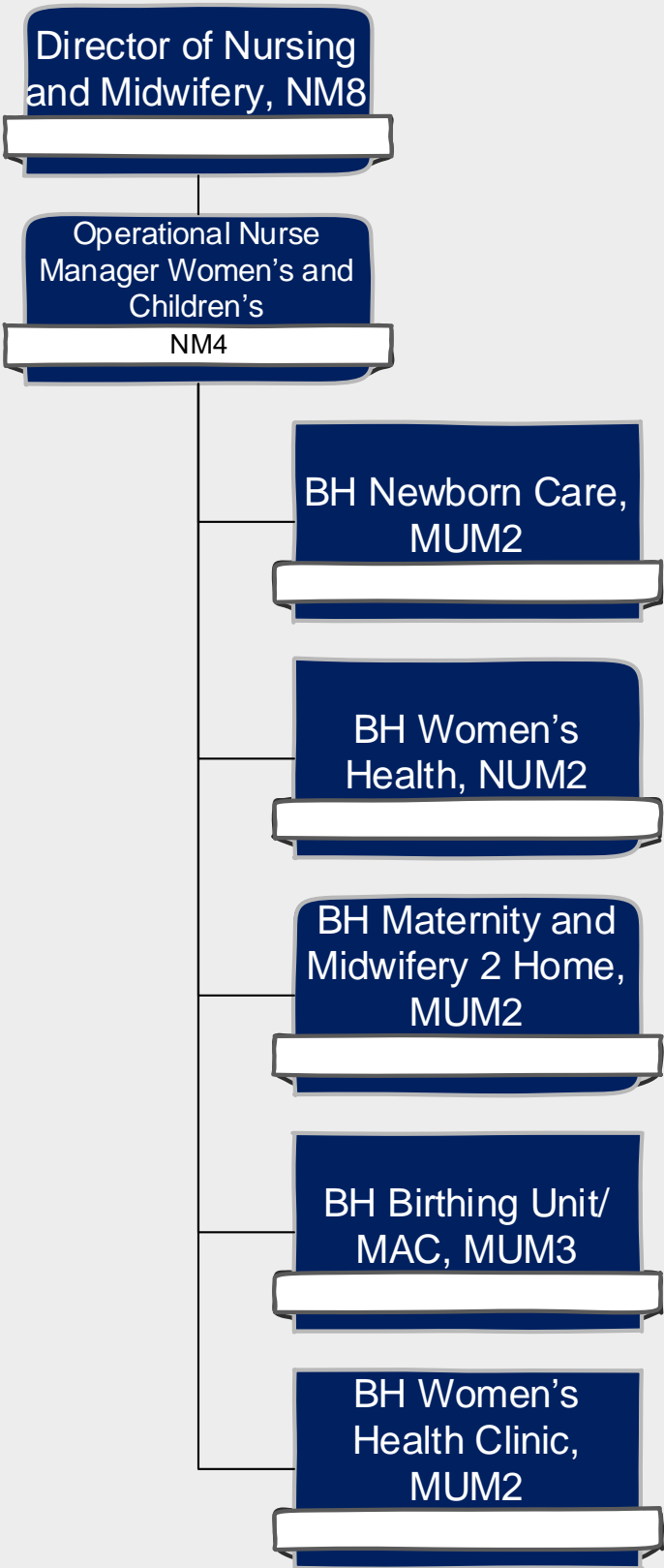


# BMDH HOSPITAL

## Women's and Children's Nursing Structure – Part 5 of 6

**CHANGES FROM VERSION 7:**

- Correction of reporting line for ONM, Women's and Children's NM4 under Director Nursing and Midwifery NM8, alongside other ONM positions
- Correction of BH Newborn Care grade from MUM3 to MUM2



LEGEND
Existing position
New Position



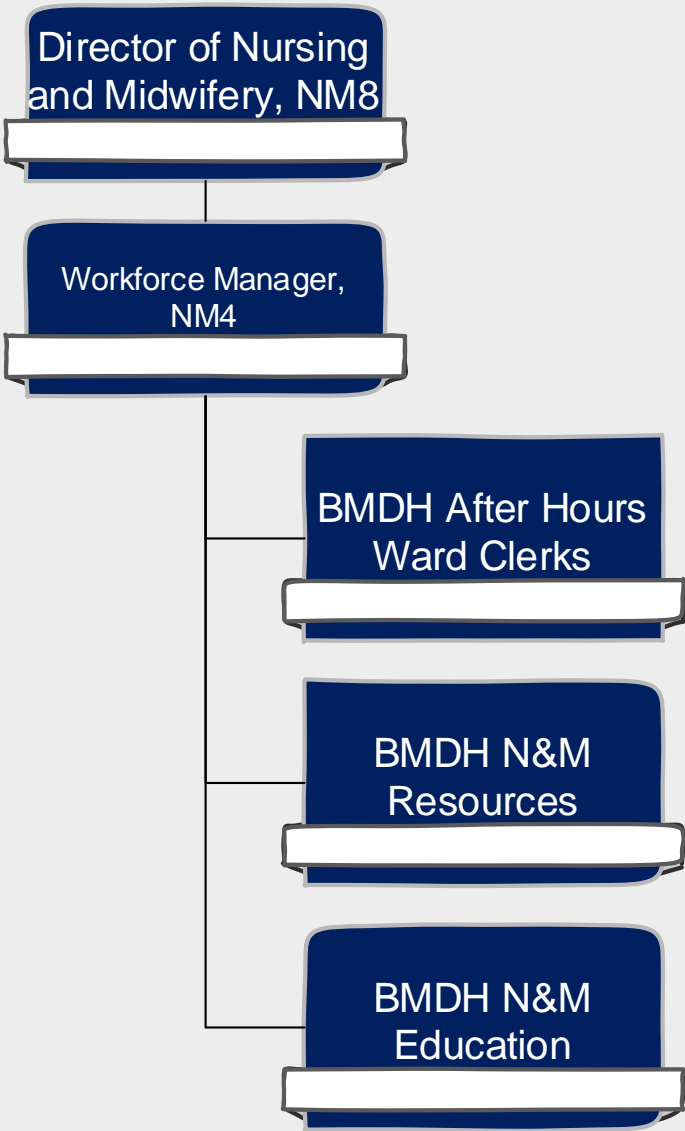
Health  
Western Sydney  
Local Health District

# BMDH HOSPITAL

## Workforce Nursing Structure – Part 6 of 6

**CHANGES FROM VERSION 7:**

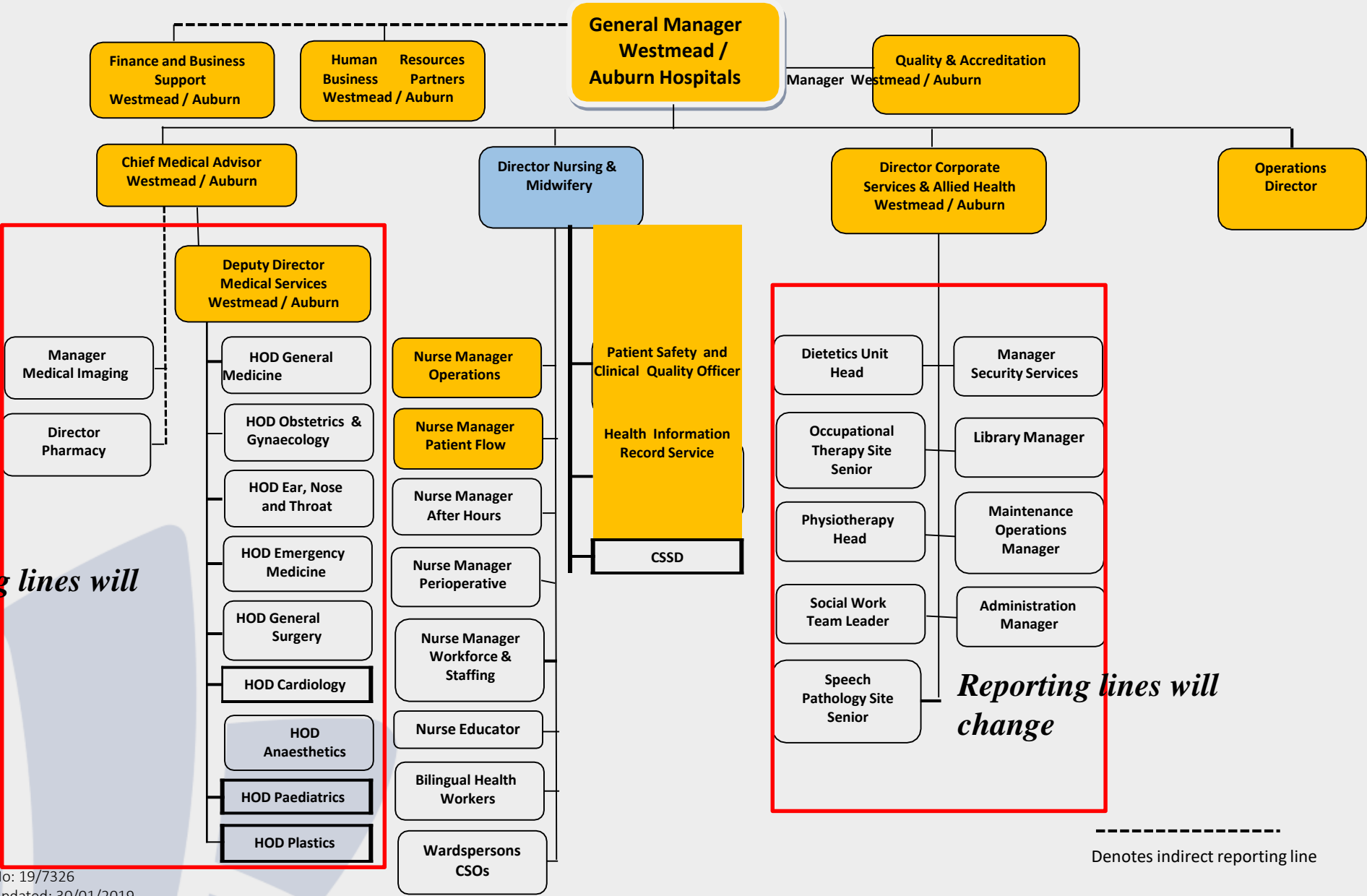
- Correction of Workforce Manager tile to Workforce Manager NM4



LEGEND
Existing position
New Position



# CURRENT AUBURN HOSPITAL ORGANISATION STRUCTURE (affected highlighted)



Doc No: 19/7326  
Last updated: 30/01/2019  
Approved by Brett Thompson, General Manager 08/02/2019

# AUBURN HOSPITAL ORGANISATION STRUCTURE

**CHANGES FROM VERSION 7:**

- Correction of grade and classification for PLOs and PLO Team Leader
- Correction of title for Finance Business Partner to Finance and Revenue Business Partner HSM3
- Correction of Revenue Officer HSM2
- Correction of Security Services Manager grade from HSM2 to HSM1 and General Services Manager HSM2
- Correction of grade and title for Director Human Resources HSM3 from Manager Human Resources HSM2
- Correction of title for Manager Finance & Corporate Services from Corporate & Finance Manager
- Correction of title for Manager Quality and Safety from Patient Safety & Quality Manager
- Correction of classification for Manager Allied Health from 0.4FTE to 0.6FTE and grade Level 6
- Correction of Volunteer Manager reporting line from Human Resources Manager to Manager Finance & Corporate Services

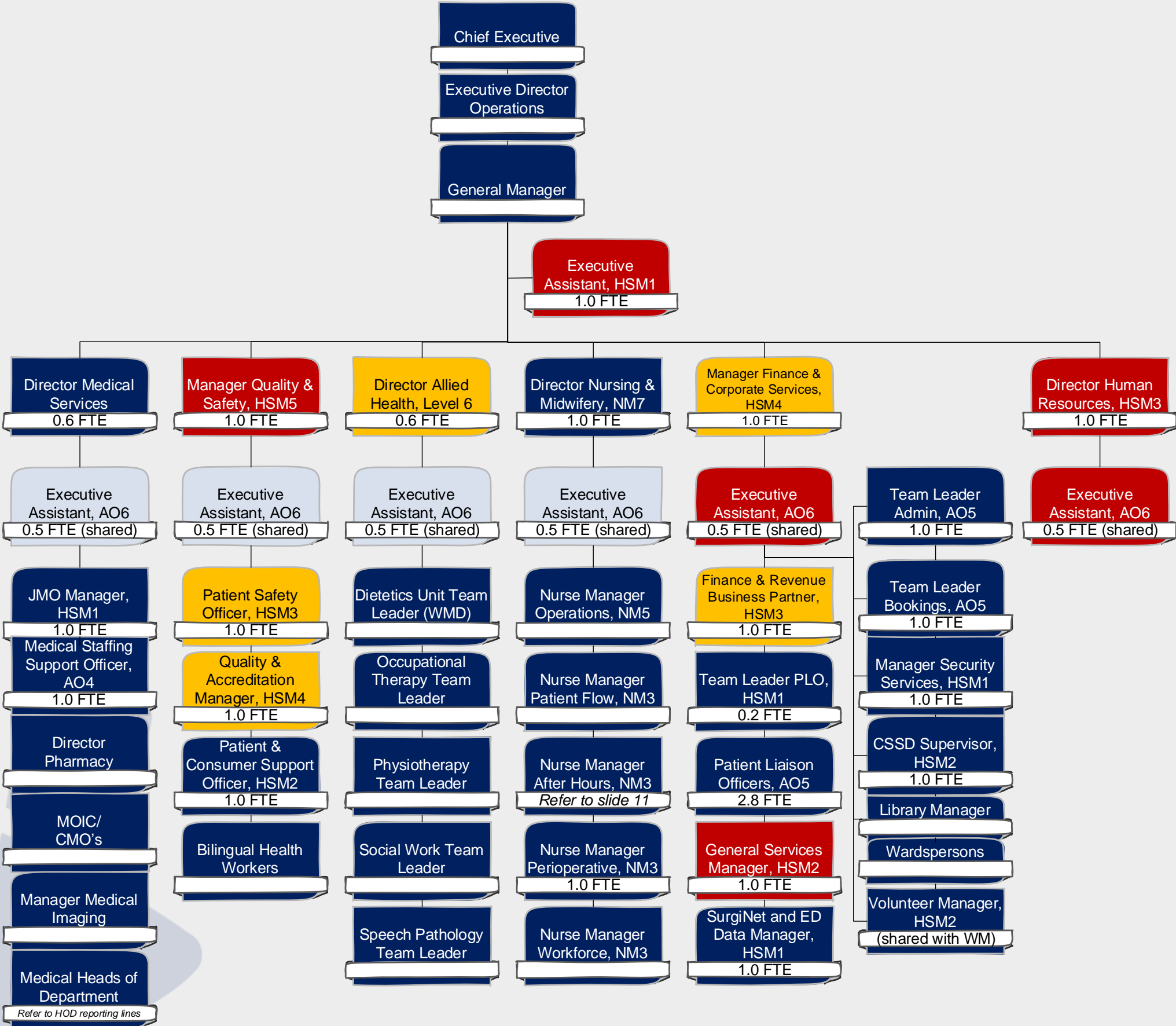
LEGEND

Existing position

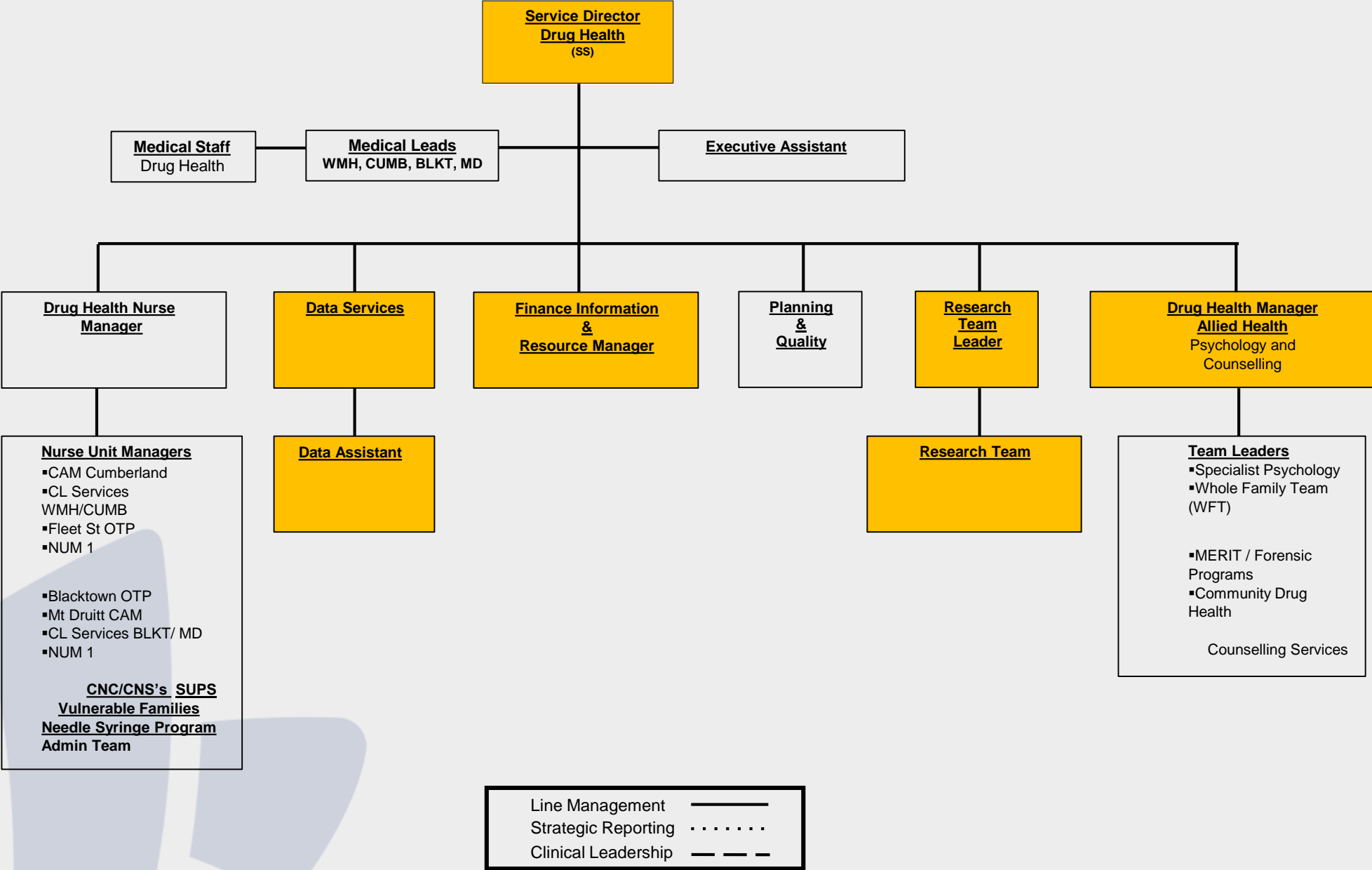
New Position

Current PT change to full-time

Split role to become 1 FTE



# CURRENT DRUG HEALTH ORGANISATION STRUCTURE (affected highlighted)



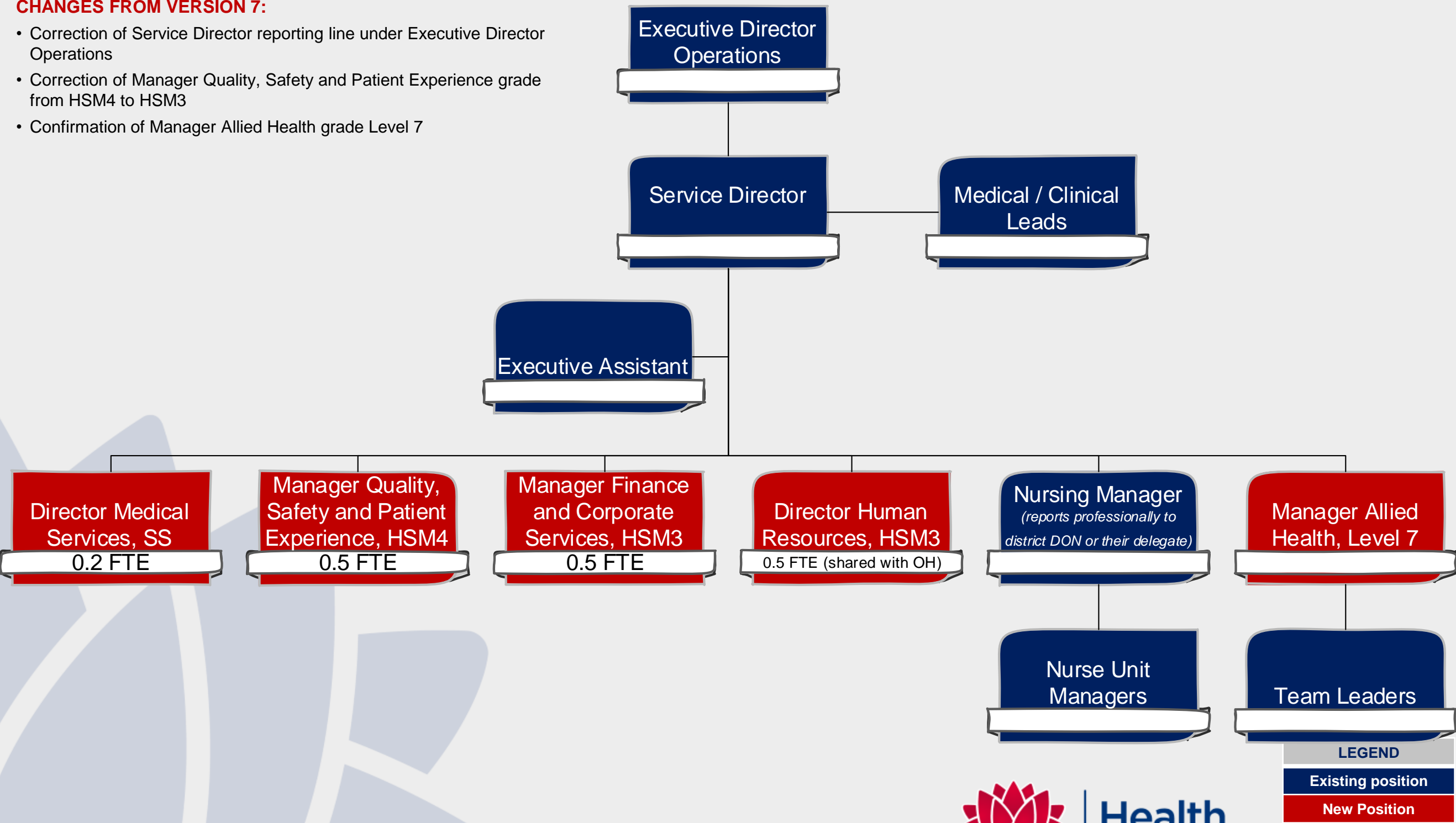
Created: 16 July 2019  
V2: 23 July 2019



# DRUG HEALTH SERVICES ORGANISATION STRUCTURE

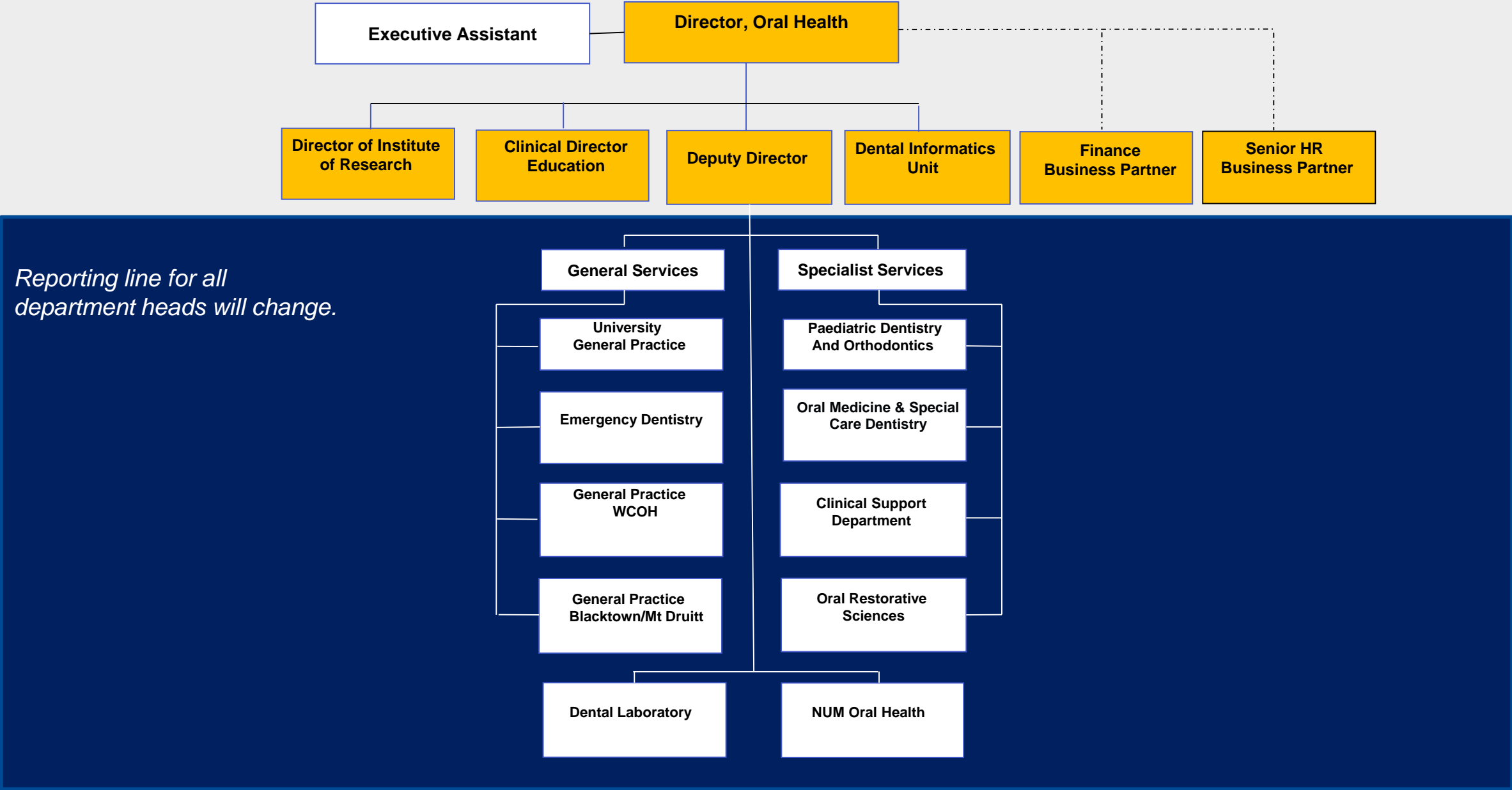
**CHANGES FROM VERSION 7:**

- Correction of Service Director reporting line under Executive Director Operations
- Correction of Manager Quality, Safety and Patient Experience grade from HSM4 to HSM3
- Confirmation of Manager Allied Health grade Level 7





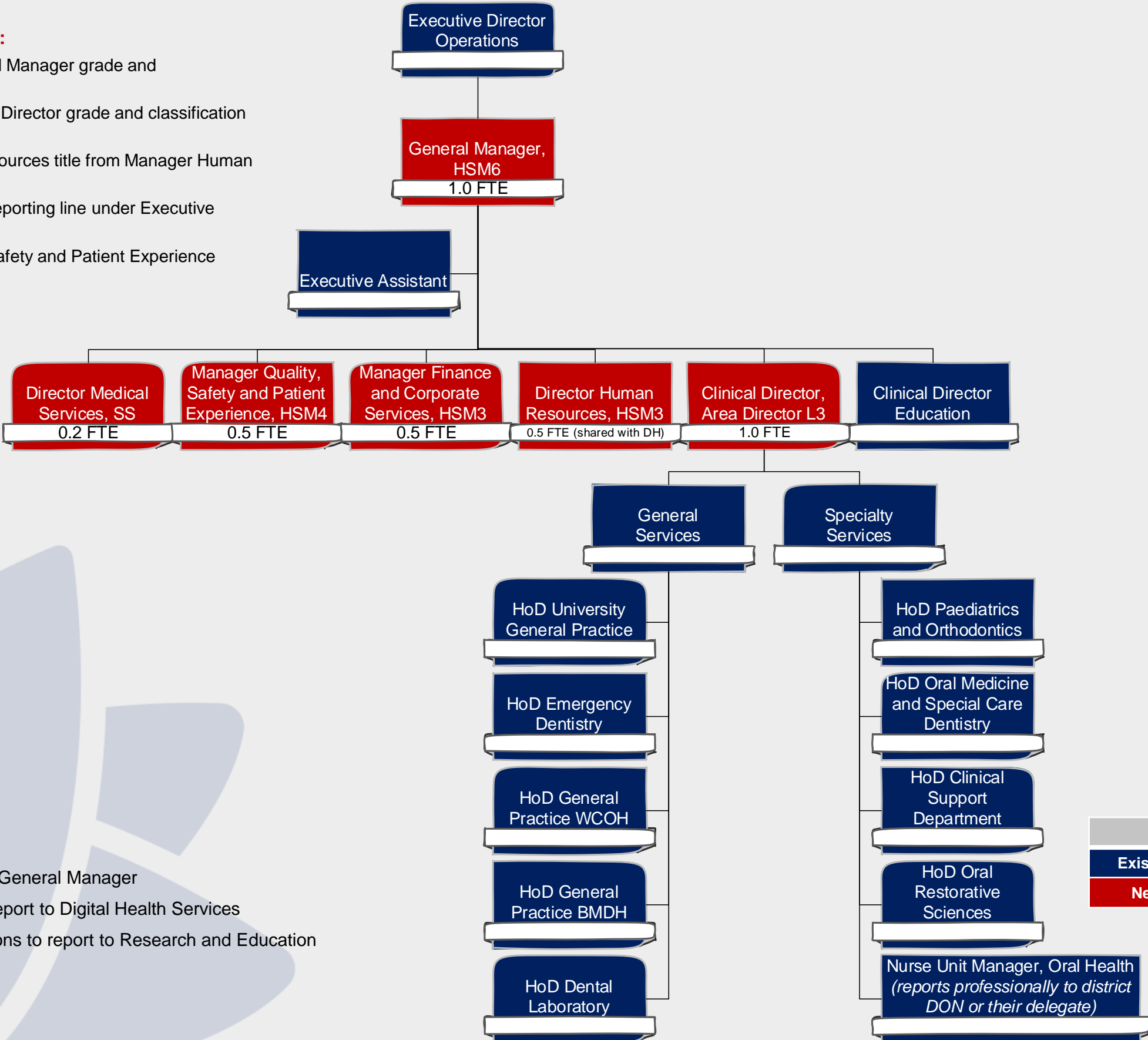
# CURRENT ORAL HEALTH ORGANISATION STRUCTURE (affected highlighted)



# ORAL HEALTH ORGANISATION STRUCTURE

**CHANGES FROM VERSION 7:**

- Correction of Oral Health General Manager grade and classification to 1FTE HSM6
- Correction of Oral Health Clinical Director grade and classification to 1FTE Area Director Level 3
- Correction of Director Human resources title from Manager Human Resources
- Correction of General Manager reporting line under Executive Director Operations
- Correction of Manager Quality, Safety and Patient Experience grade from HSM4 to HSM3



- Note:**
- Patient Flow to report to General Manager
  - Existing IT functions to report to Digital Health Services
  - Existing Research positions to report to Research and Education

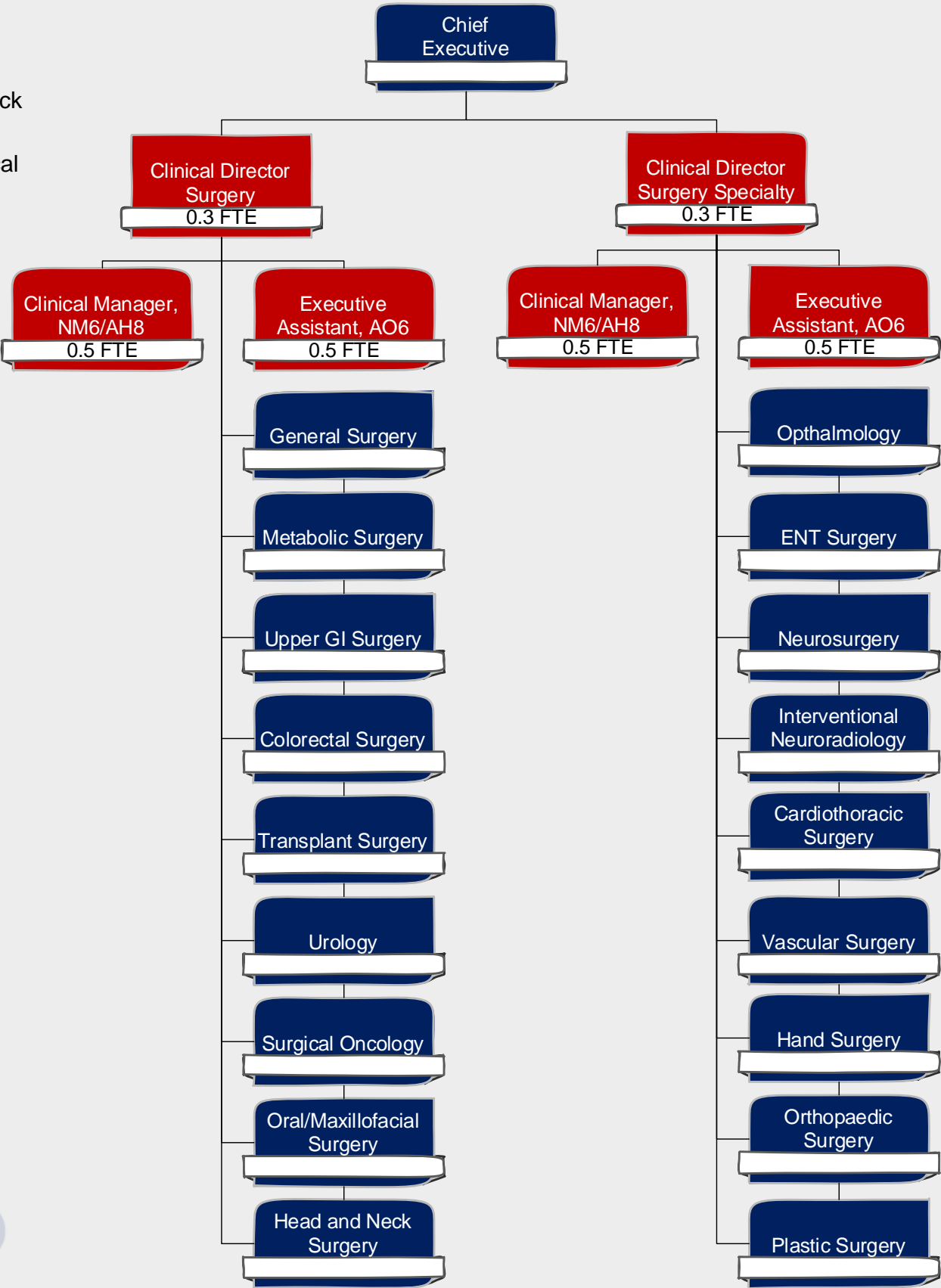
LEGEND
Existing position
New Position

# CLINICAL NETWORK

## SURGERY AND SURGERY SPECIALTY

**CHANGES FROM VERSION 7:**

- Confirmation and correction of Surgery and Surgery Speciality Clinical Networks to separate Surgical Oncology, and Head and Neck Surgery
- Correction of Clinical Network Administration Assistant title to Clinical Network Executive Assistant and addition of grade AO6
- Correction of Clinical Network Clinical Manager grade NM6/AH8



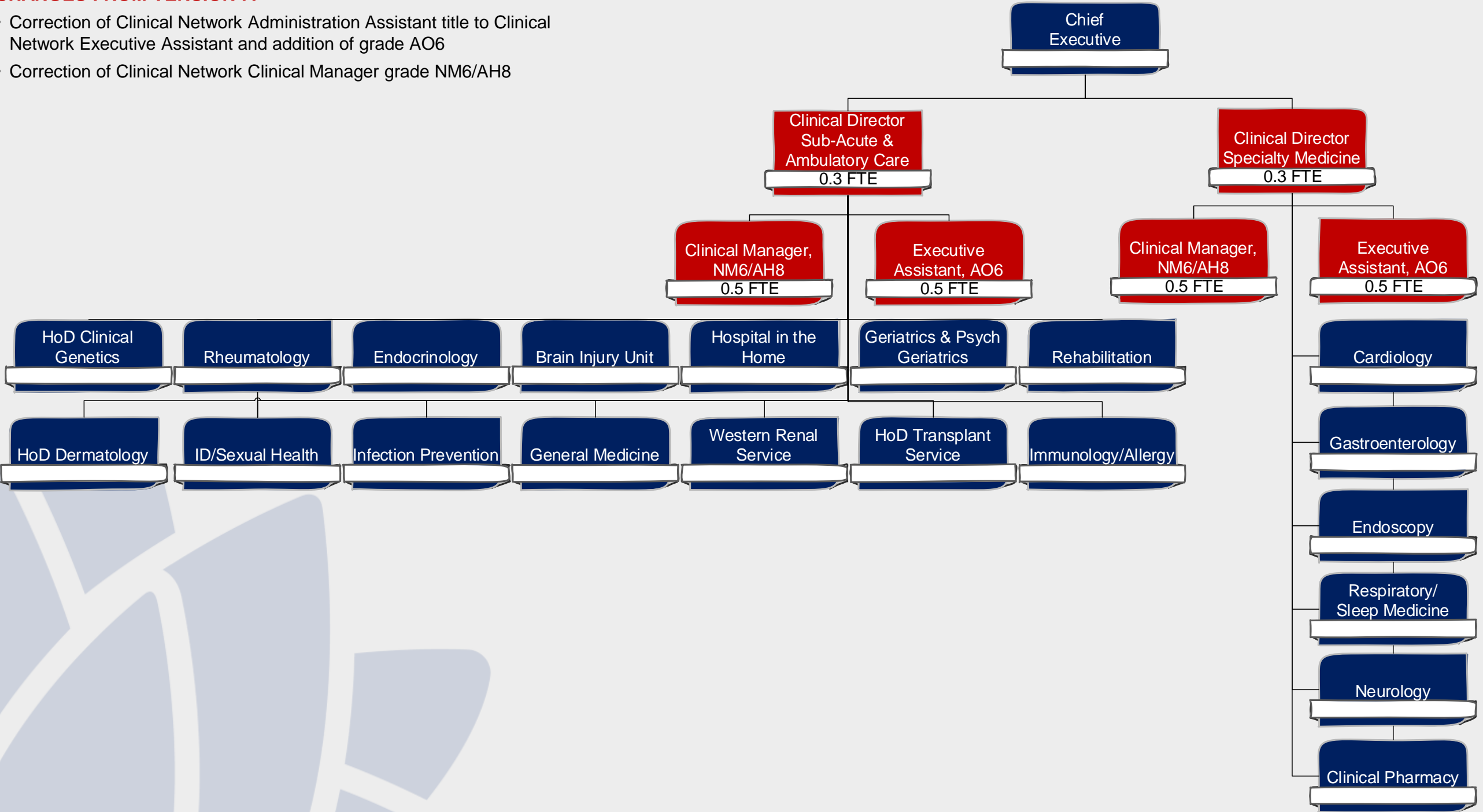
LEGEND
Existing position
New Position

# CLINICAL NETWORK

## SUB-ACUTE AND AMBULATORY MEDICINE & SPECIALTY CARE

**CHANGES FROM VERSION 7:**

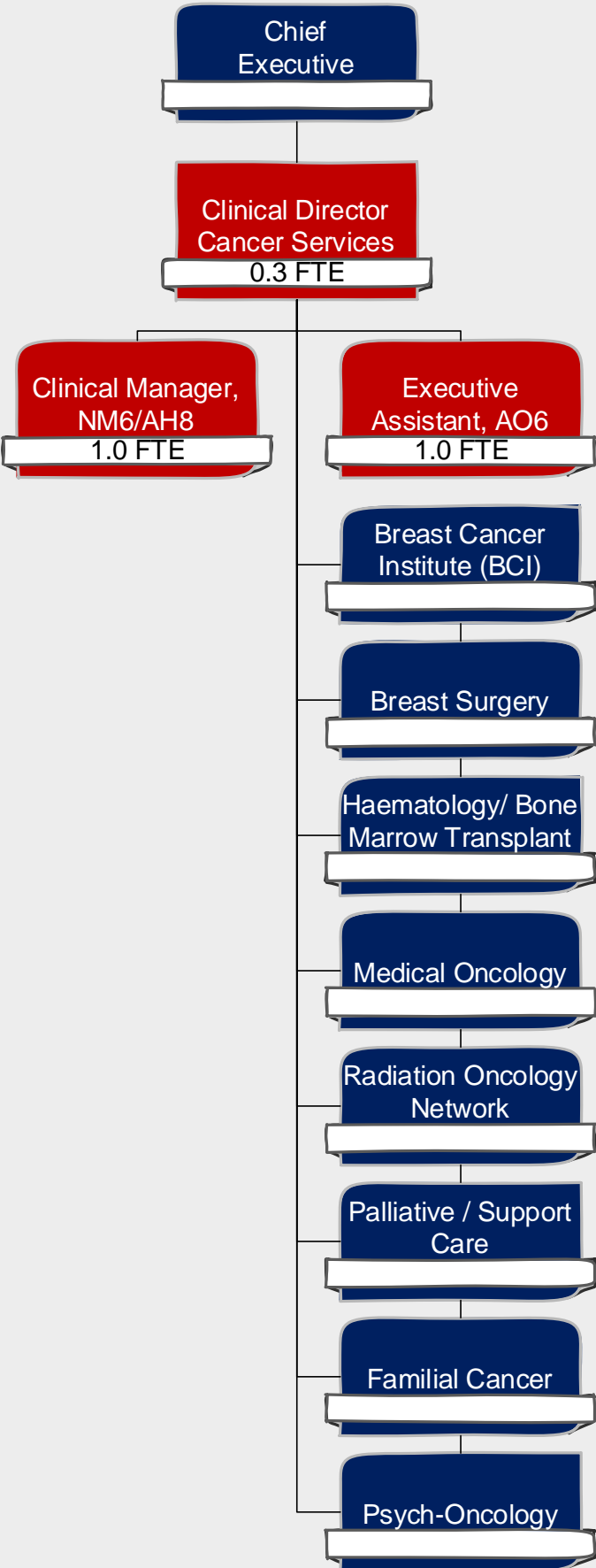
- Correction of Clinical Network Administration Assistant title to Clinical Network Executive Assistant and addition of grade AO6
- Correction of Clinical Network Clinical Manager grade NM6/AH8



# CLINICAL NETWORK CANCER SERVICES

**CHANGES FROM VERSION 7:**

- Correction of Radiology Oncology title to Radiation Oncology
- Correction of Cancer Services Clinical Network to include Psych-oncology and Familial Cancer
- Correction of Clinical Network Administration Assistant title to Clinical Network Executive Assistant and addition of grade AO6
- Correction of Clinical Network Clinical Manager grade NM6/AH8 and classification from 0.5FTE to 1FTE
- Correction of Clinical Network Executive Assistant from 0.5FTE to 1 FTE



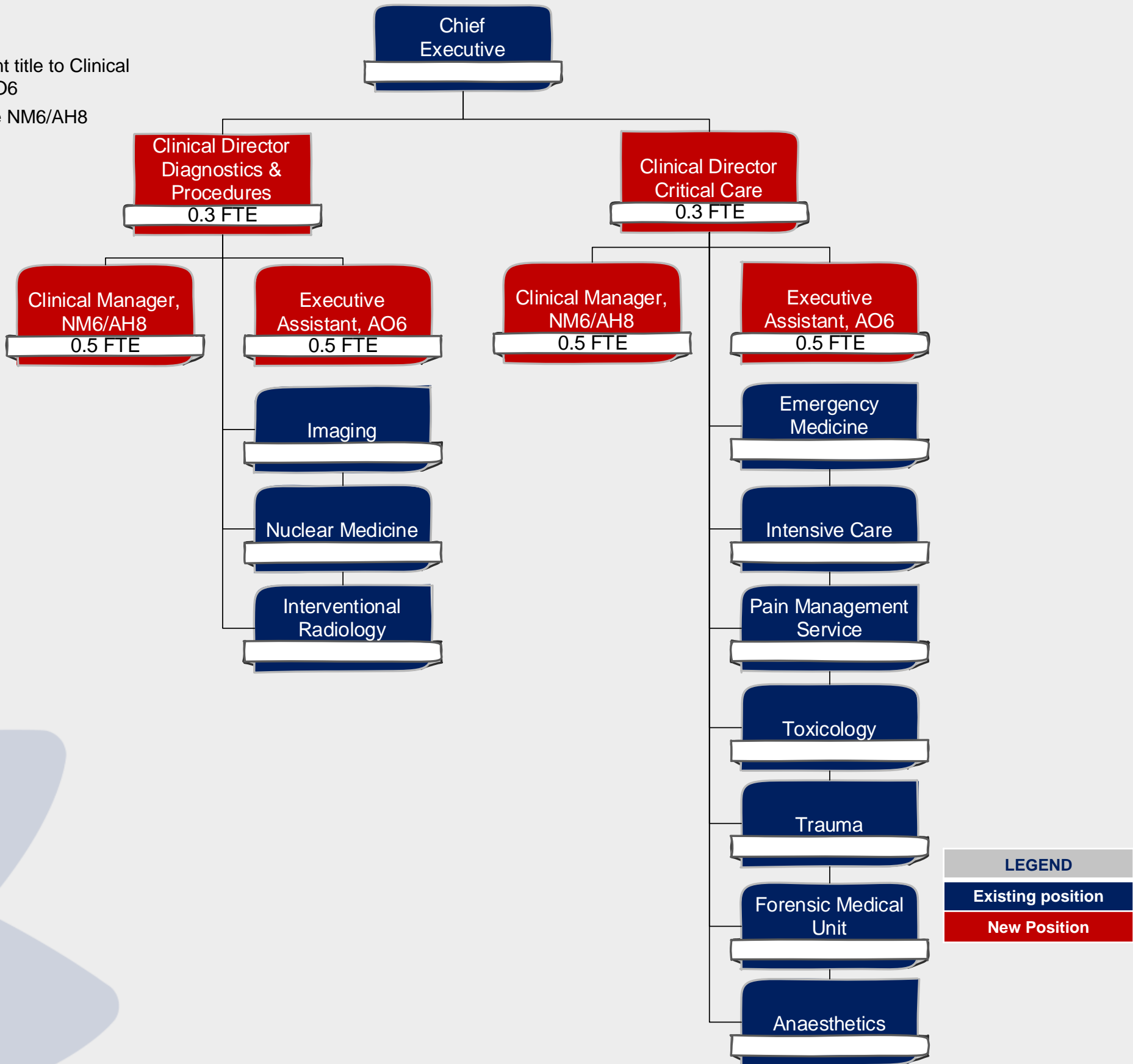
LEGEND
Existing position
New Position

# CLINICAL NETWORK

## DIAGNOSTICS AND PROCEDURES & CRITICAL CARE

**CHANGES FROM VERSION 7:**

- Correction of Clinical Network Administration Assistant title to Clinical Network Executive Assistant and addition of grade AO6
- Correction of Clinical Network Clinical Manager grade NM6/AH8



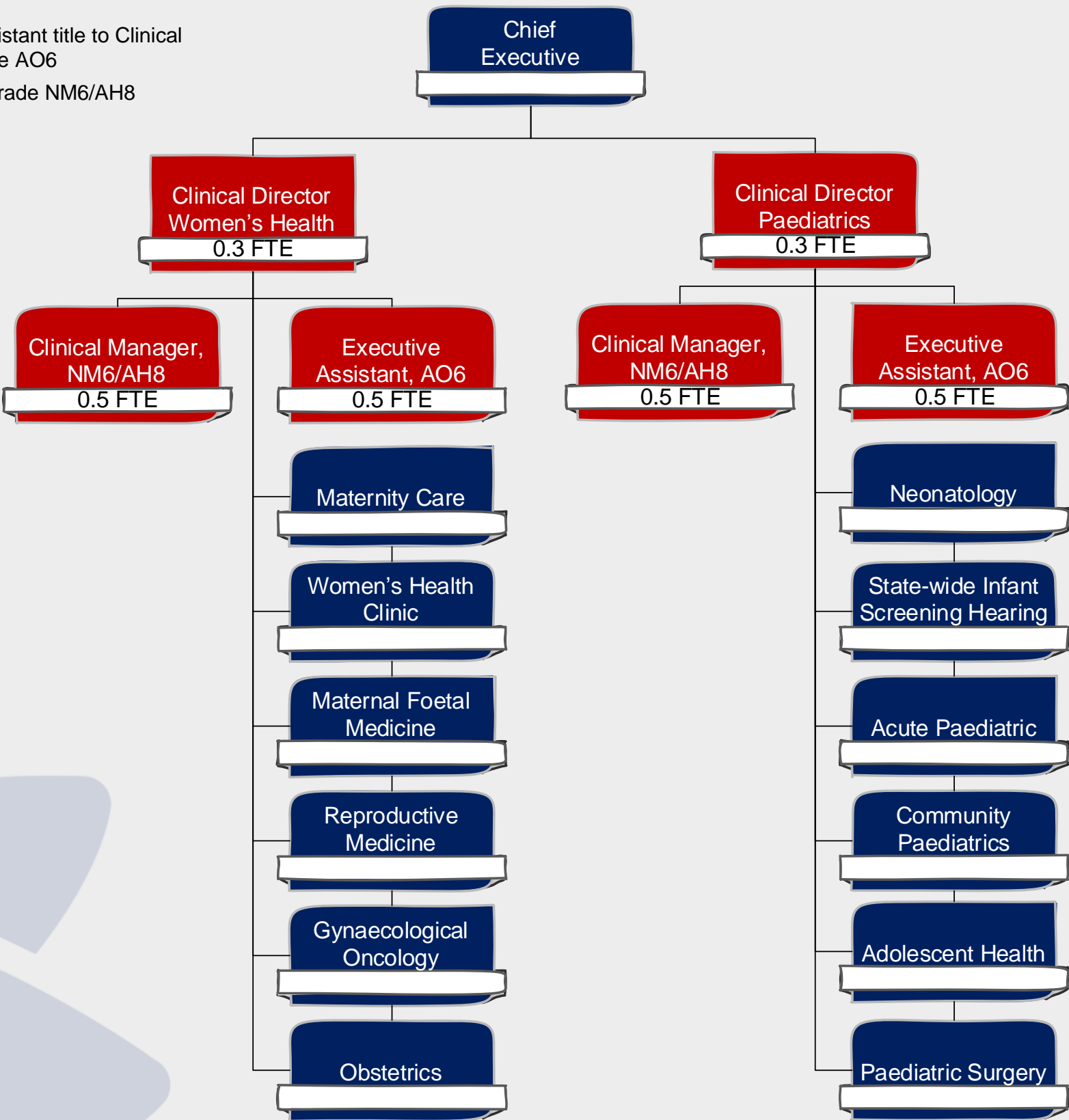


# CLINICAL NETWORK

## WOMEN'S HEALTH AND PAEDIATRICS

**CHANGES FROM VERSION 7:**

- Correction of Clinical Network Administration Assistant title to Clinical Network Executive Assistant and addition of grade AO6
- Correction of Clinical Network Clinical Manager grade NM6/AH8



LEGEND
Existing position
New Position